

# Weatherstrip Replacement Guide

for Andersen® 200 Series Hinged Patio Doors - Inswing

Please read this guide completely before starting. For questions about this and other Andersen® products, call 1-888-888-7020.

For the most current version of this guide visit [www.andersenwindows.com](http://www.andersenwindows.com). Consult your local building code official for applicable building codes and regulations. Thank you for choosing Andersen® products.

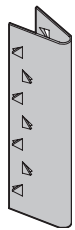
Please leave this information with homeowner.

## Parts Included

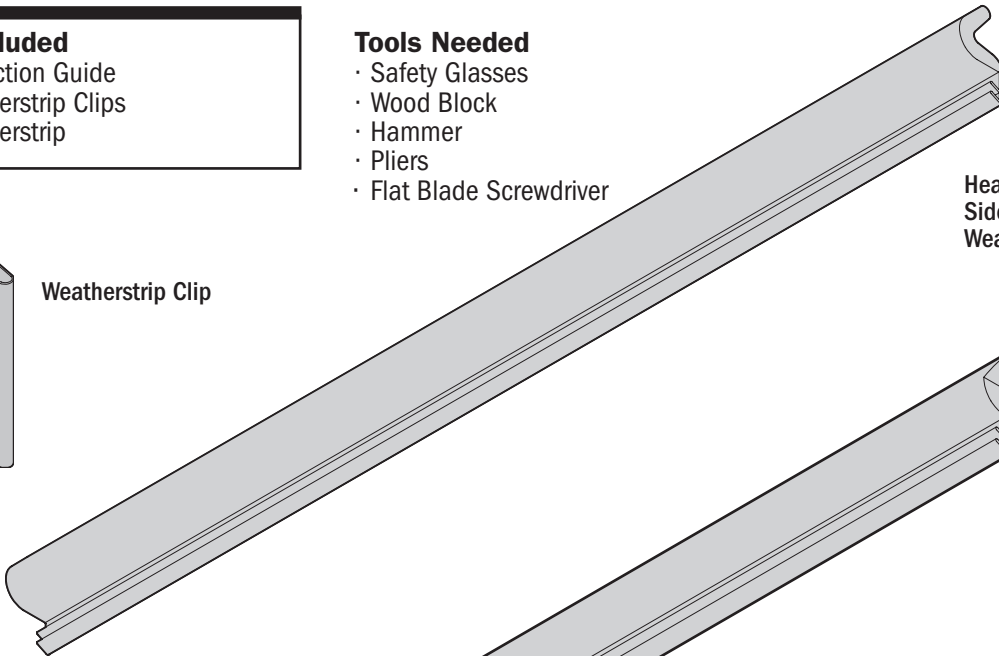
- (1) Instruction Guide
- (2) Weatherstrip Clips
- (1) Weatherstrip

## Tools Needed

- Safety Glasses
- Wood Block
- Hammer
- Pliers
- Flat Blade Screwdriver



Weatherstrip Clip

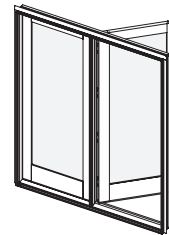


Head Jamb,  
Side Jamb/Hinged Astragal  
Weatherstrip

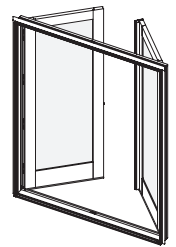
Passive Panel  
Astragal Weatherstrip  
(AP, PA Units Only)



AL, AR Units



SAL, ASR Units



AP, PA Units

► Verify correct weatherstrip.

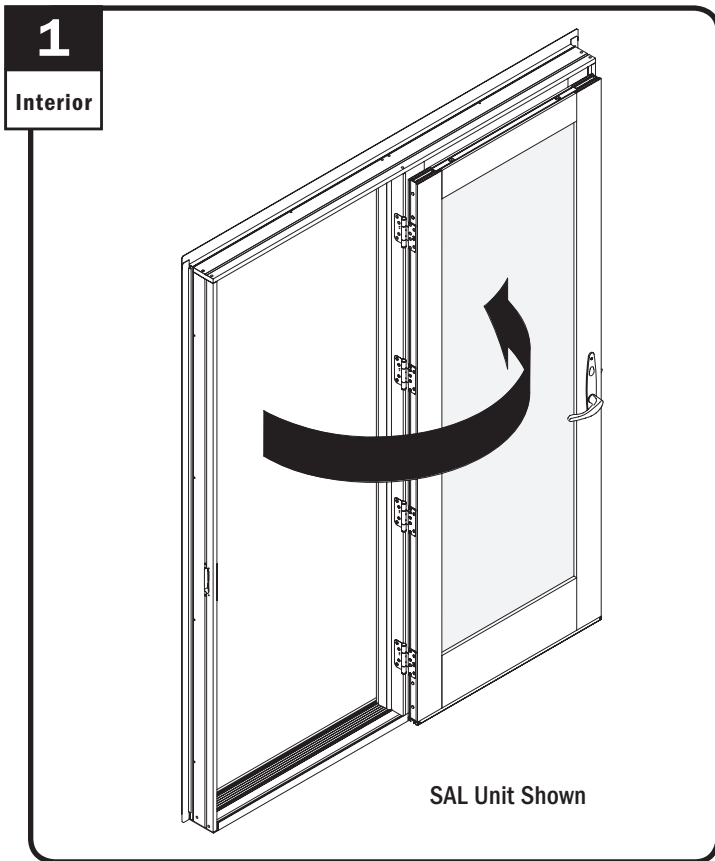
Read and follow these warnings during installation.

### **WARNING**

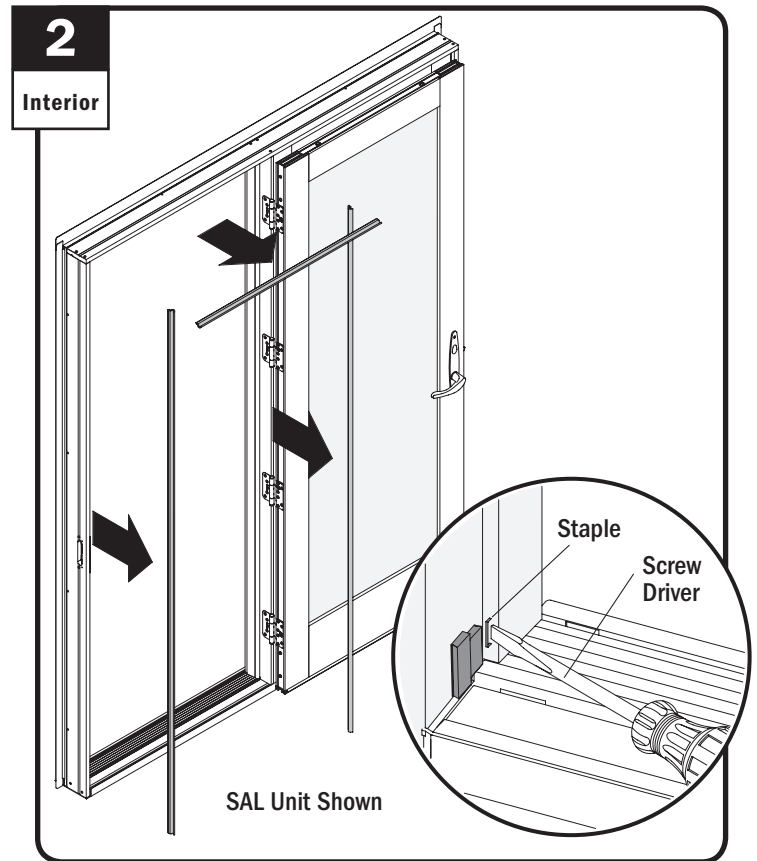
Follow manufacturer's instructions for safe operation of hand/power tools. Always wear safety glasses. Failure to do so may result in injury and/or product damage.

### **WARNING**

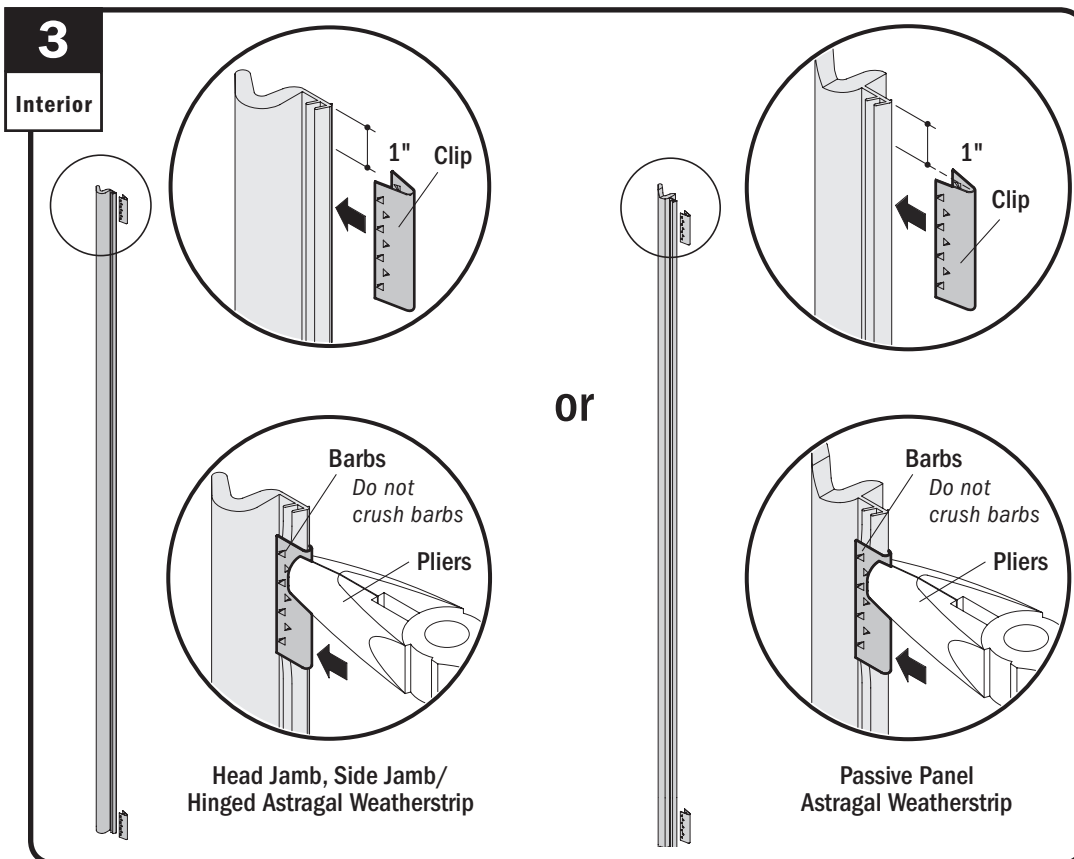
Use caution when working at elevated heights and around unit openings. Follow manufacturer's instructions for safe use of ladder and/or scaffolding. Failure to do so may result in injury or death.



Open panel.



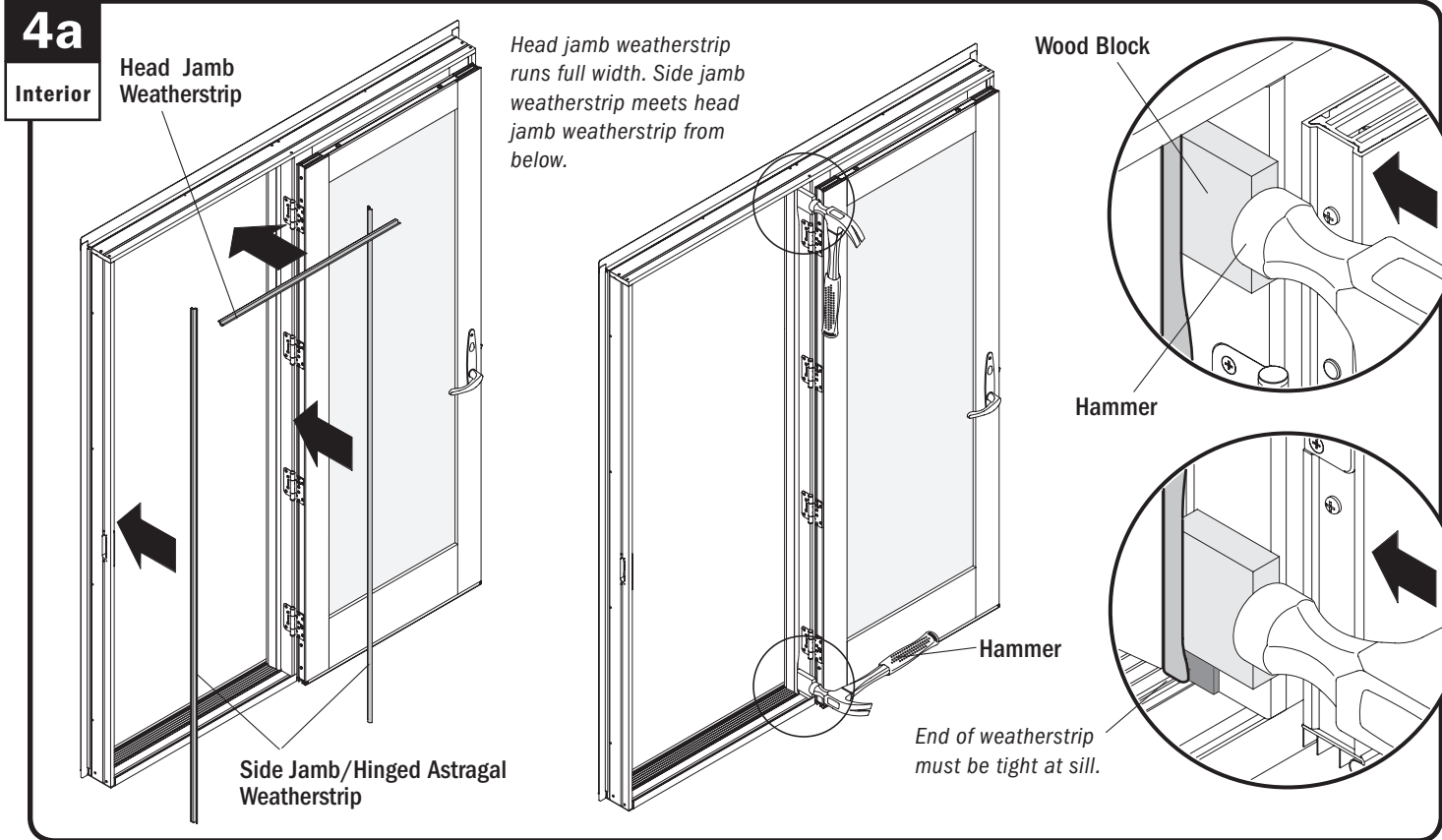
Remove weatherstrip to be replaced. Remove weatherstrip staples or weatherstrip clips if present.



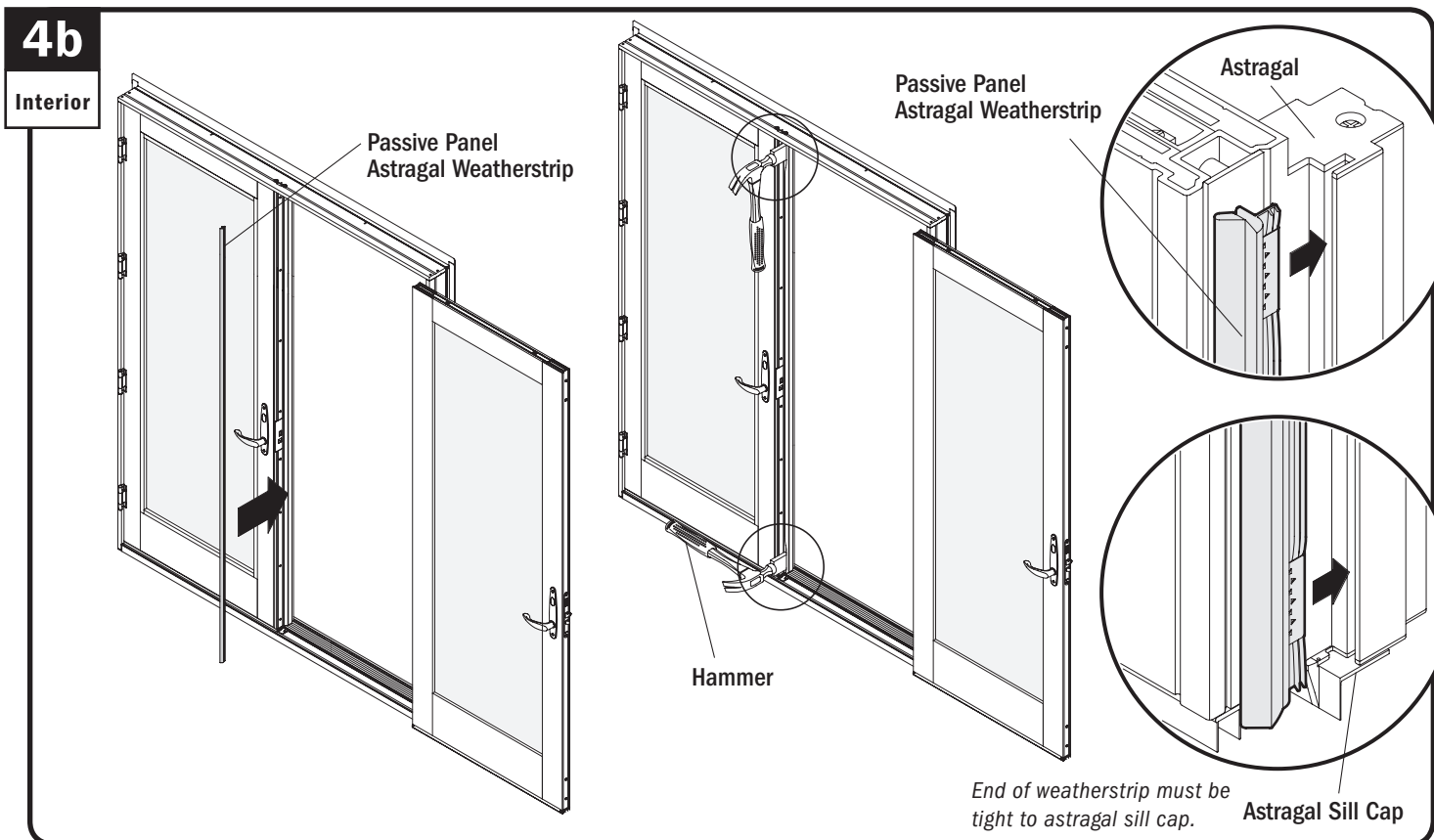
► For head jamb, side jamb, or hinged astragal weatherstrip replacement, proceed to step 4a.

► For passive panel astragal weatherstrip replacement, proceed to step 4b. (AP, PA Units Only)

Apply weatherstrip clips 1" from each end of weatherstrip. Crimp clips onto weatherstrip.



For side jamb, position weatherstrip tight at sill. Tap bottom clip into kerf and work upwards until seated. Tap in top clip **or** For head jamb weatherstrip, tap in clip at one end and work across until seated. Tap in opposite side clip. **Installation is finished.**



For passive panel astragal weatherstrip, position end flush at bottom of astragal. Tap bottom clip into kerf and work upwards until seated. Tap in top clip. **Installation is finished.**

This page has been intentionally left blank.