

Interior Extension Jambs

for Andersen® Frenchwood® Hinged Patio Doors

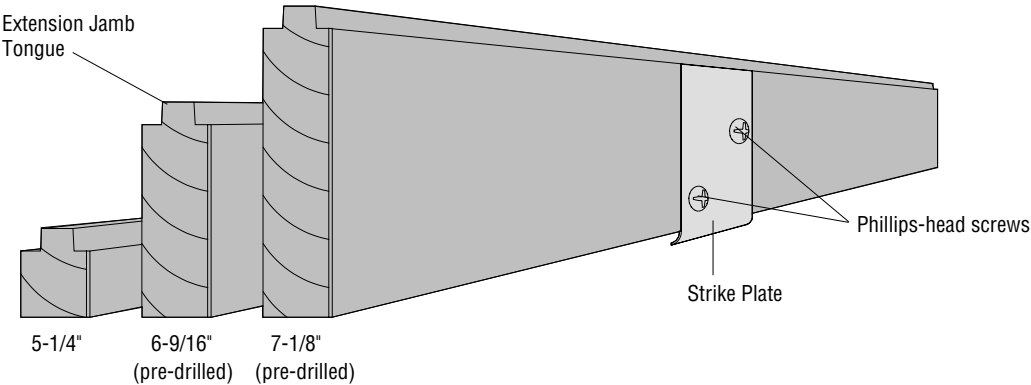


Congratulations! You have just purchased one of the many fine Andersen® products. For ease of installation and continued enjoyment of your Andersen product, please read and follow this Installation Guide completely. You may direct any questions about this or other Andersen products to your local Andersen dealer. Andersen dealers can be found in the Yellow Pages under Windows.

Installer: Please leave this Installation Guide with the home owner to file for future reference. Thank you for choosing Andersen®.

Importance of Proper Assembly and Installation


Proper assembly, installation, and maintenance of Andersen products are essential if the benefits of experienced product design and engineering, quality materials, and skilled workmanship are to be fully attained. General recommendations regarding assembly and installation are guidelines only. Every assembly and installation is different (windloads, structural support, etc.), and Andersen strongly recommends consultation with an Andersen supplier or an experienced contractor, architect, or structural engineer prior to the assembly and installation of any Andersen product. Assembly and installation of Andersen products is the sole responsibility of the architect, building owner, contractor and/or consumer and Andersen has no responsibility in this regard.



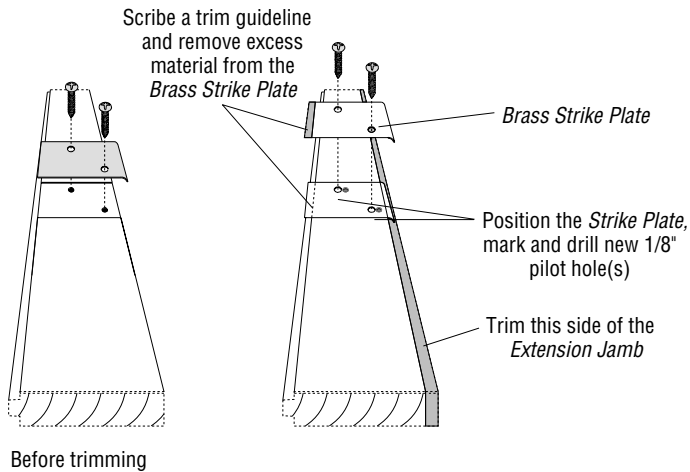
Kit Designation	Parts Included
FWH-S	(2) Stationary Side Extension Jamb
FWH-SS	(1) Head Extension Jamb
FWH-SSS	(1) Installation Instructions
FWH-AP/PA	

Kit Designation	Parts Included
FWH-AS/SA	(1) Active Side Extension Jamb
FWH-AL	(1) Stationary Side Extension Jamb
FWH-AR	(1) Head Extension Jamb
FWH-SAL	(1) Brass Strike Plate
FWH-ASR	(1) Installation Instructions

- Installation Tools Needed**
- Safety Glasses
 - Electric Drill
 - 1/8" drill bit
 - Hammer
 - Nails
 - Awl
 - No. 2 Phillips-head screw driver
 - Drill
 - Wood saw (if trimming *Extension Jamb*)
 - Metal saw (if trimming *Strike Plate*)

 WARNING	 WARNING	 WARNING
Improper use of hand or power tools could result in personal injury and/or product damage. Follow equipment manufacturer's instructions for safe operation. Always wear safety glasses.	Use of ladders and/or scaffolding and working at elevated levels may be hazardous. Follow equipment manufacturer's instructions for safe operation. Use extreme caution when working around window and door openings. Personal injury and/or falls could occur.	Weight of window and door unit(s) and accessories will vary. Use a reasonable number of people with sufficient strength to lift, carry and install window and door unit(s) and accessories. Always use appropriate lifting techniques.

1. Trim the Extension Jamb width (if necessary)



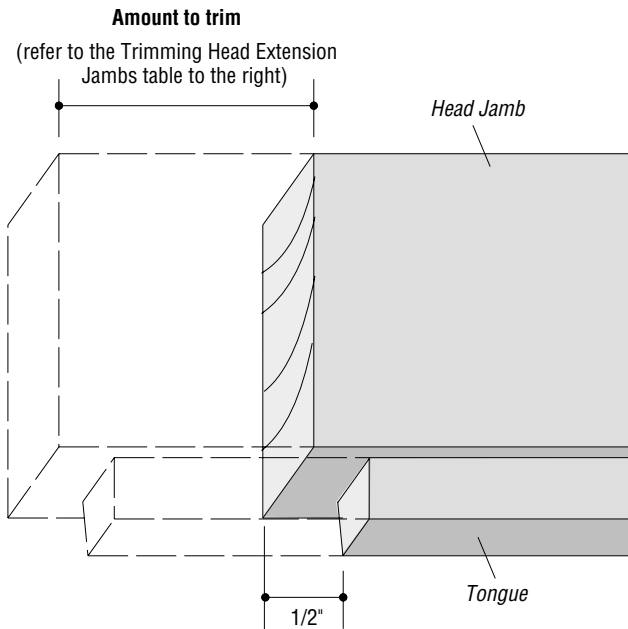
- Ensure the *Extension Jamb* are flush with the interior wall surface.
- If not remove the *Brass Strike Plate*, then rip the *Extension Jamb* to the correct dimension (when trimming the extension jamb remove material from its interior edge—do not trim the *Tongue*).
- Repeat the trimming procedure for all of the *Extension Jamb*s.

Trimming the Brass Strike Plate

- Place the *Strike Plate* into its new position.
- Scribe a trim guideline and use a metal saw to trim the *Strike Plate*. The *Strike Plate* needs to be trimmed off where it extends into the *Tongue* area (trim off the same amount that you trimmed from the *Extension Jamb*).
- Place the *Strike Plate* into its new position, mark and pre-drill two 1/8" mounting holes and attach the *Strike Plate*.

2. Trim the Head Extension Jamb (if necessary)

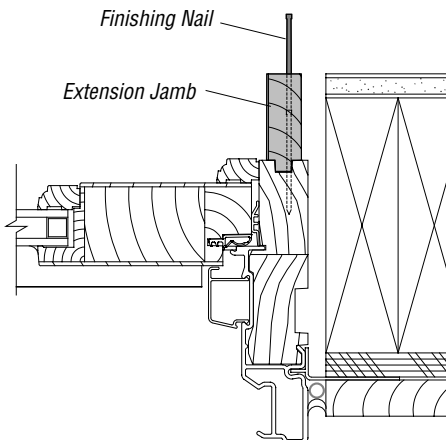
- You may need to trim the length of the *Head Extension Jamb* in this kit. To determine if this is necessary, examine the Trimming Head Extension Jamb table below.



For FWH Door Unit #	Extension Jamb Kit Designation		
	Single Panel Units: FWH-S FWH-AR FWH-AL	Double Panel Units: FWH-AS/SA FWH-AP/PA FWH-SS	Triple Panel Units: FWH-SAS FWH-SSS
2168 / 21611 / 2180	Trim off 23"		
2768 / 27611 / 2780	Trim off 6"		
2968 / 29611 / 2980	Trim off 4"		
3168 / 31611 / 3180			
4168 / 41611 / 4180		Trim off 23"	
5068 / 50611 / 5080		Trim off 12"	
5468 / 54611 / 5480		Trim off 8"	
6068 / 60611 / 6080		Trim off 0"	
8068 / 80611 / 8080			Trim off 12"
9068 / 90611 / 9080			Trim off 0"

- Then trim off the amount indicated in the table. Trim off only one end of Head Jamb.
- Notch the *Tongue* portion of the extension an additional 1/2" to resemble the original profile.

3. Install the Extension Jamb into the Side Jamb



- Insert the tongued edge of the *Extension Jamb* into the groove of the side jamb.
- Check for proper alignment.
- Nail the *Extension Jamb* using the recommended finishing nails.

Recommended Finish Nail(s)

For Extension Jamb	use Finish Nail
5-1/4"	6d
6-9/16" (pre-drilled)	16d
7-1/8" (pre-drilled)	16d