



Contents

Frenchwood® Door Sidelights and Transoms

Basic Unit Details

Sidelight 12-2

Transom 12-3

Options / Accessories

Andersen® Grilles..... 12-4

Joining Details 12-6

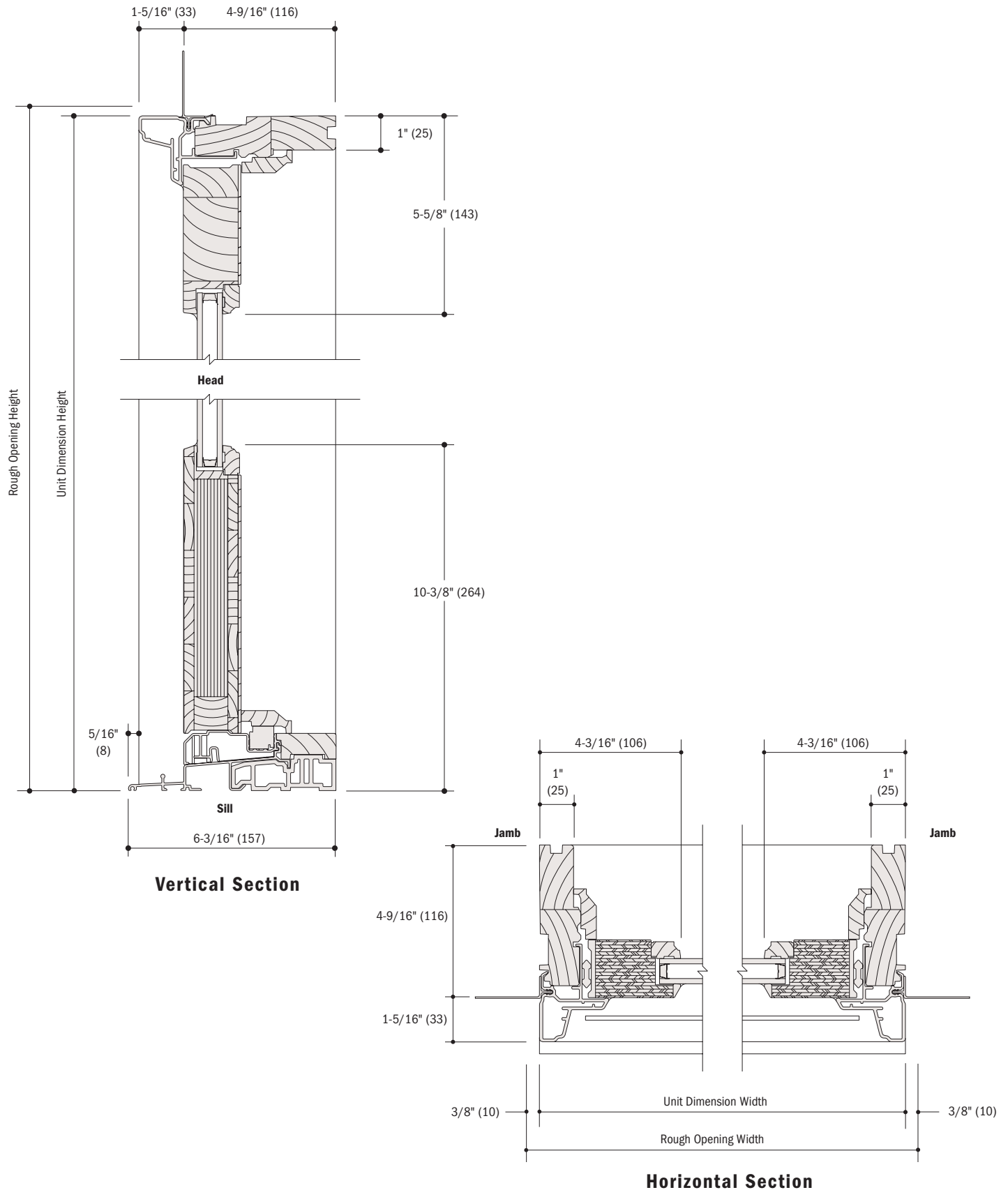
Suggested Product Applications 12-8

- Matches 400 Series Frenchwood hinged and outswing patio doors.
- Low-maintenance, durable exterior available in White, Sandtone, Terratone® or Forest Green
- Natural wood interior in pine, oak, maple or prefinished white
- 20/10 year limited warranty, fully transferable non-prorated
- High-Performance™ Low-E tempered or High-Performance Sun™ Low-E tempered glass is standard

Basic Unit Details - Sidelight

Basic Unit

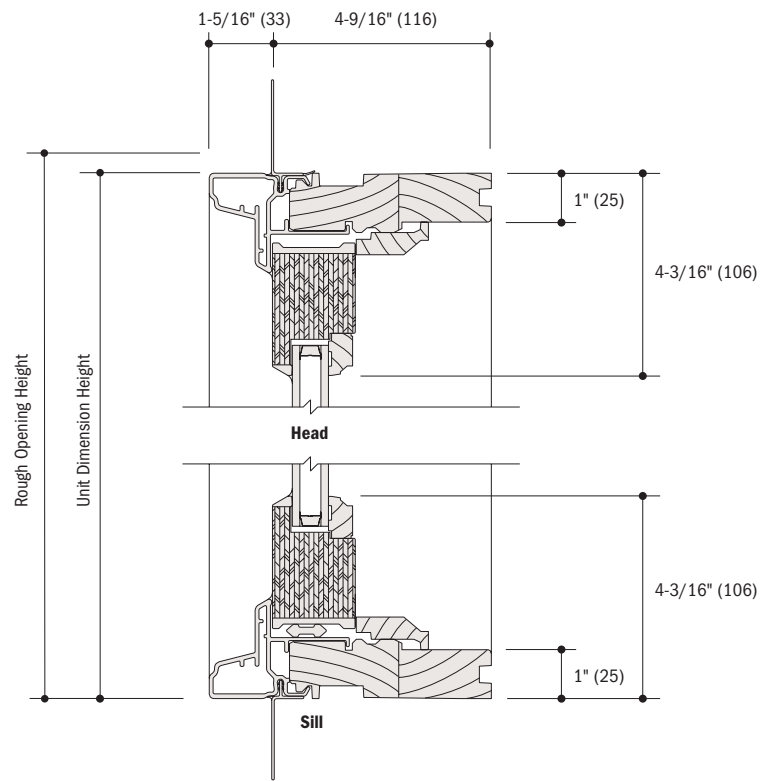
Scale 3" = 1'-0" (1:4)



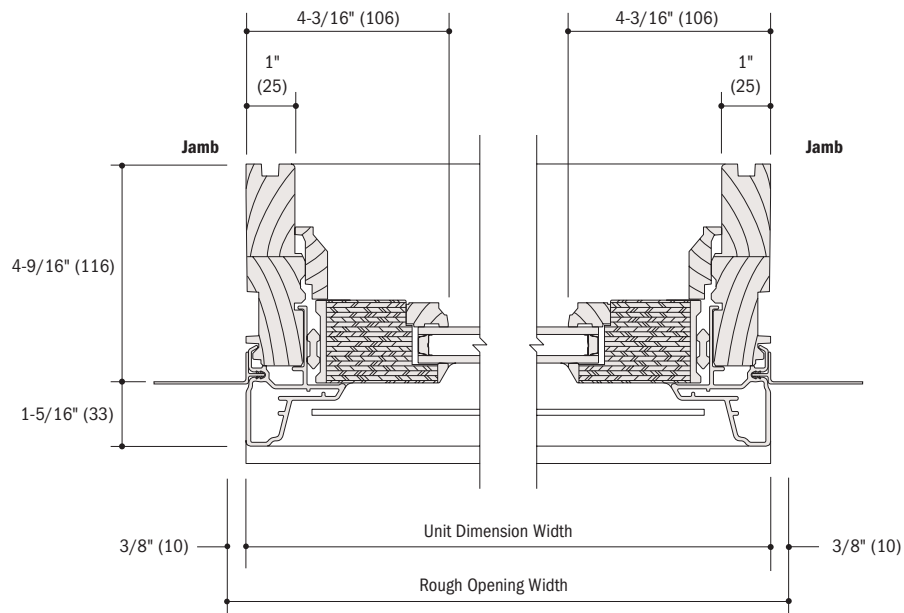
Basic Unit Details - Transom

Basic Unit

Scale 3" = 1'-0" (1:4)






Vertical Section



Horizontal Section

Options / Accessories

Andersen® Divided Light Grilles

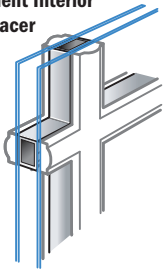
-  Available now
-  Available only with 3/8" glass through the Andersen Divided Light program
-  Please check with Andersen for availability

		Andersen® 400 Series Windows																200 Series Narroline® Double-Hung & Transom	Andersen® 400 Series Doors			
		Casement & Awning	Casement Picture Window	Gliding Window	Woodwright® Double-Hung & Transom	Woodwright® Picture Window	Woodwright® Archtop & Unequal Leg Archtop	Woodwright® Springline Single-Hung	Tilt-Wash Double-Hung & Transom	Tilt-Wash Picture Window	Circle Top™ & Quarter Round	Arch	Springline™	Flexiframe®	Elliptical	Circle & Oval	Gothic		Frenchwood® Gliding	Frenchwood® Hinged Inswing	Frenchwood® Hinged Outswing	Frenchwood® Patio Door Sidelights & Transoms
Exterior Color	White	●	●	●	●	●	●	●	●	●	●	●	●	●	●	●	●	●	●	●	●	●
	Sandtone	●	●	●	●	●	●	●	●	●	●	●	●	●	●	●	●	●	●	●	●	●
	Terratone®	●	●	●	●	●	●	●	●	●	●	●	●	●	●	●	●	●	●	●	●	●
	Forest Green	●	●	●	●	●	●	●	●	●	●	●	●	●	●	●	●	●	●	●	●	●
Width	3/4"	●	●	●	●	●	●	●	●	●	●	●	●	●	●	●	●	●	●	●	●	●
	7/8"	●	●	●	●	●	●	●	●	●	●	●	●	●	●	●	●	●	●	●	●	●
	1-1/8"	●	●	●	●	●	●	●	●	●	●	●	●	●	✓	●	●	●	●	●	●	●
	2-1/4"	●	●	●	●	●	●	●	●	●	●	✓	●	●	✓	✓	●	●	●	●	●	●
Type	With Spacer	●	●	●	●	●	●	●	●	●	●	●	●	●	✓	✓	●	●	●	●	●	●
	Without Spacer	●	●	●	●	●	●	●	●	●	●	●	●	●	●	●	●	●	●	●	●	●
Interior	Maple	●	●	●	●	●	●	●	●	●	●	●	●	●	●	●	●	●	●	●	●	●
	Oak	●	●	●	●	●	●	●	●	●	●	●	●	●	●	●	●	●	●	●	●	●
	Prefinished	●	●	●	●	●	●	●	●	●	●	●	●	●	●	●	●	●	●	●	●	●
	Pine	●	●	●	●	●	●	●	●	●	●	●	●	●	●	●	●	●	●	●	●	●
Patterns	Colonial	●	●	●	●	●	●	●	●	●	●	●	●	✓	●	●	●	●	●	●	●	●
	Modified Colonial	●	●	●	●	●	●	●	●	●	●	●	●	●	●	●	●	●	●	●	●	●
	Modified Col W/Check Rail	●	●	●	●	●	●	●	●	●	●	●	●	●	●	●	●	●	●	●	●	●
	Prairie A	●	●	●	●	●	●	●	●	●	●	✓	●	●	●	●	●	●	●	●	●	●
	Short Fractional	●	●	●	●	●	●	●	●	●	●	●	●	●	●	●	●	●	●	●	●	●
	Short Fractional W/Check Rail	●	●	●	●	●	●	●	●	●	●	●	●	●	●	●	●	●	●	●	●	●
	Tall Fractional	●	●	●	●	●	●	●	●	●	●	●	●	●	●	●	●	●	●	●	●	●
	Tall Fractional W/Check Rail	●	●	●	●	●	●	●	●	●	●	●	●	●	●	●	●	●	●	●	●	●
	Victorian	●	●	●	●	●	●	●	●	●	●	●	●	●	●	●	●	●	●	●	●	●
	Renaissance	●	●	●	●	●	●	●	●	●	●	●	●	●	●	●	●	●	●	●	●	●
	Sunburst	●	●	●	●	●	●	●	●	●	●	●	●	●	●	●	●	●	●	●	●	●
	Specified Equal Light	●	●	●	●	●	●	●	●	●	●	●	●	●	●	●	●	●	●	●	●	●
	Custom	●	●	●	●	●	●	●	●	●	●	●	●	●	●	●	●	●	●	●	●	✓
Glass	HP/HP Tempered	●	●	●	●	●	●	●	●	●	●	●	●	●	●	●	●	●	●	●	●	●
	HP Sun/HP Sun Temp	●	●	●	●	●	●	●	●	●	●	●	●	●	●	●	●	●	●	●	●	●
	3/8" Low-E/Temp	●	●	●	●	●	●	●	●	●	●	●	●	●	●	●	●	●	●	●	●	●
	Single-Pane Impact	●	●	●	●	●	●	●	●	●	●	●	●	●	●	●	●	●	●	●	●	●

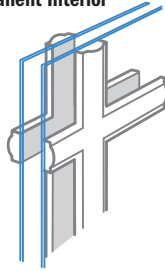
Options / Accessories

400 Series Grille Options

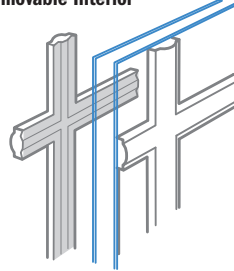
Andersen® Divided Light
Permanent Exterior
Permanent Interior
with Spacer



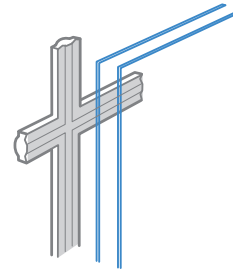
Andersen® Divided Light
Permanent Exterior
Permanent Interior



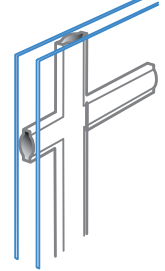
Andersen® Divided Light
Permanent Exterior
Removable Interior



Removable
Interior

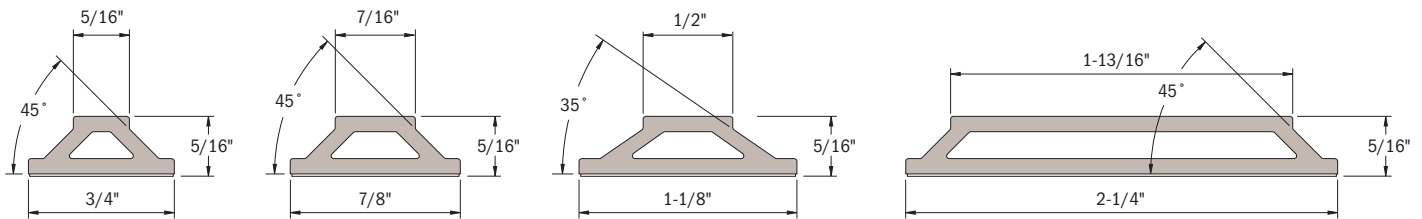


Andersen® Finelight™
Grilles-Between-the-Glass



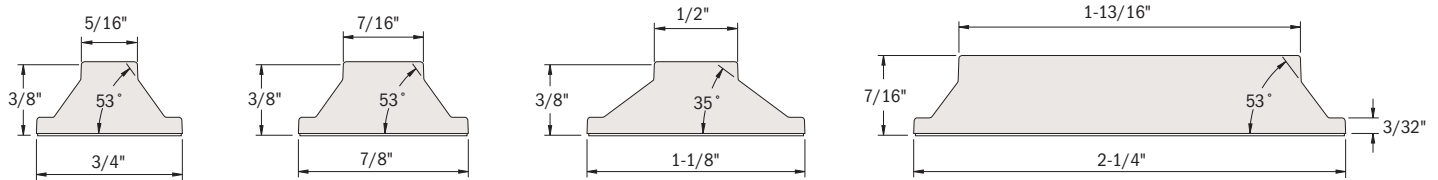
Grille Profiles • Scale = Full • Dimensions include thickness of tape.

Permanent Exterior Fibrex® Material Grille Profiles (chamfer profile). Also used for pre-finished interior, except 400 Series Woodwright® double-hung windows.

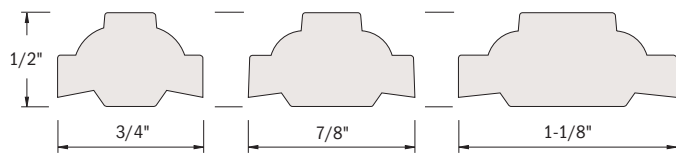


Permanent Interior Wood Grille Profiles (chamfer profile).

The Fibrex® material exterior grille is used when a permanent prefinished grille is specified, except with 400 Series Woodwright® double-hung windows.

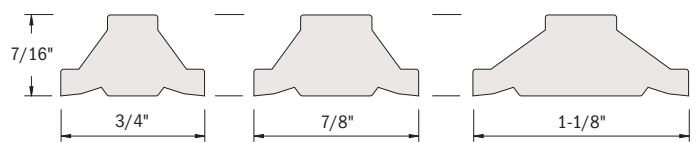


Removable Interior Wood Grille Profile (roman ogee profile).

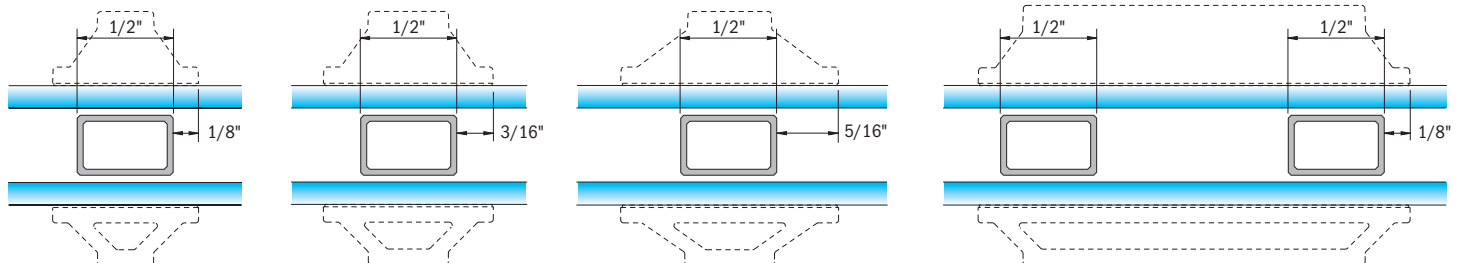


Removable Interior Wood Grille Profile (Chamfer profile).

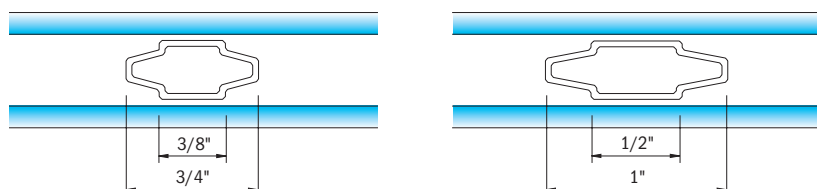
400 Series Woodwright® double-hung windows only.



Permanent Full Divided Light Grille spacer location.



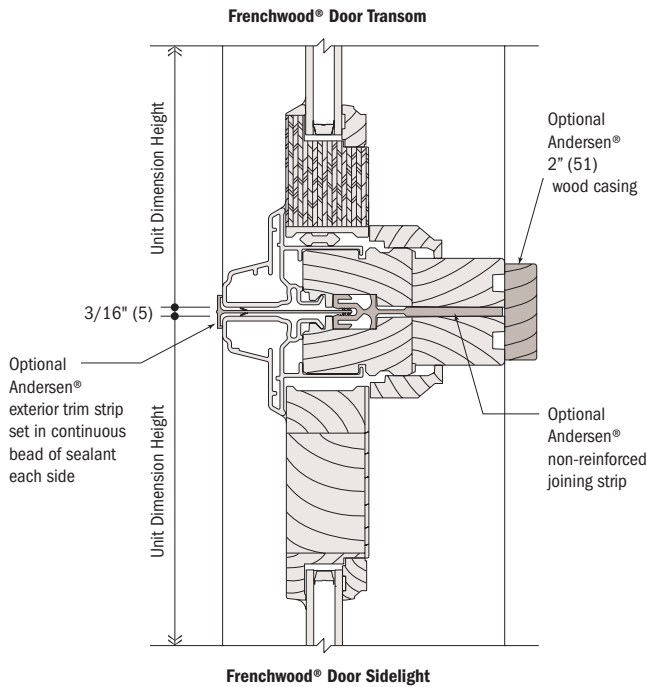
Andersen® Finelight™ Grilles-Between-the-Glass.



Joining Details

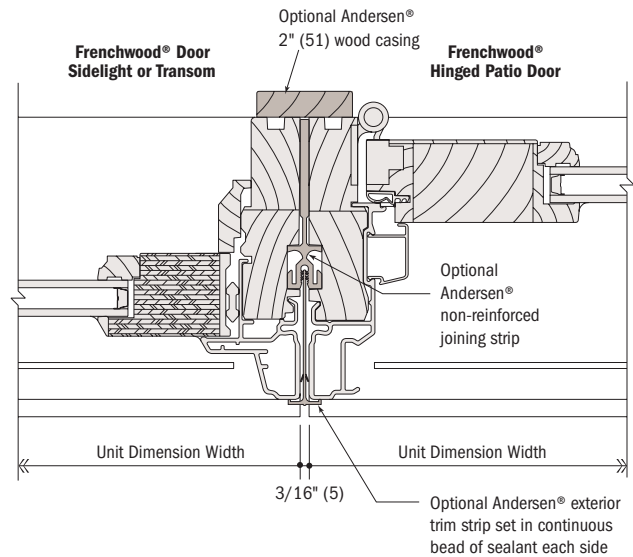
Andersen® Joining Materials

Scale 3" = 1'-0" (1:4)

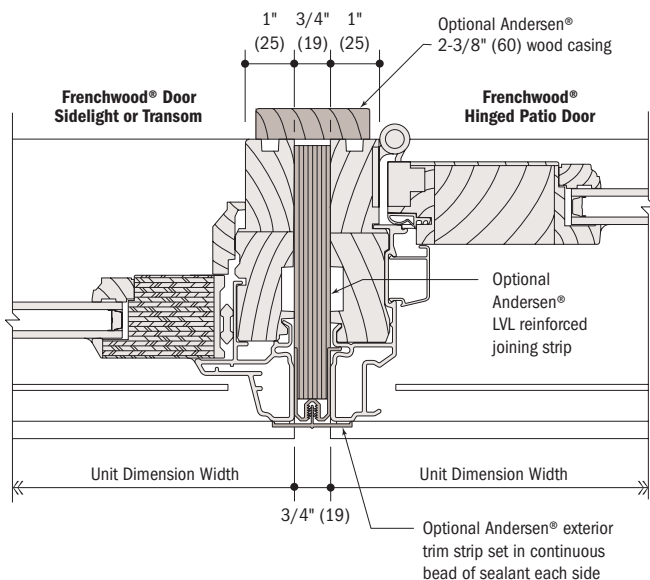


Joining Compatibility

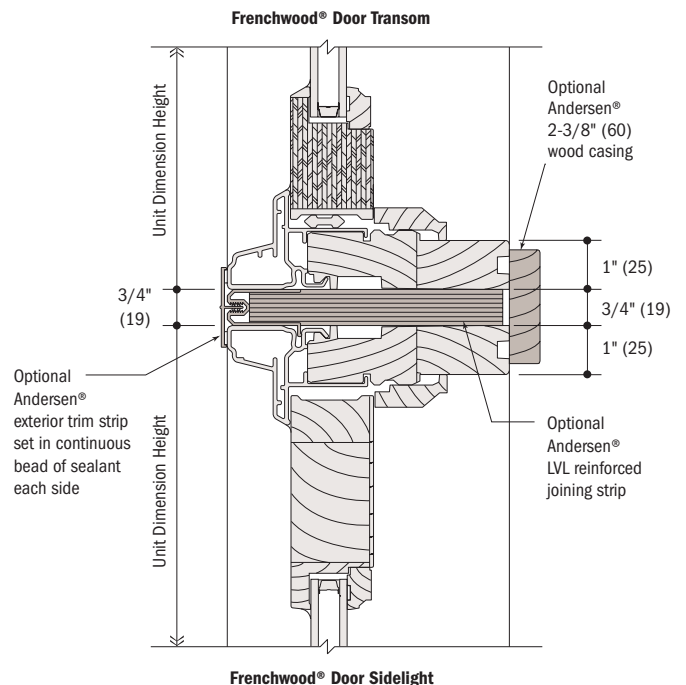
Many Andersen® units are designed to be joined with other Andersen units in a variety of non-reinforced and reinforced combinations. Other combination types and joining methods can be viewed in the *Andersen® Product Guide for Professionals*, in Andersen Window Studio® software, and by visiting andersenwindows.com. Combination designs should always be checked for design pressure performance requirements to ensure the appropriate joining method is specified.



Andersen Aluminum Non-reinforced Transom



Andersen Aluminum Non-reinforced Mullion



Andersen LVL Reinforced Mullion

Andersen LVL Reinforced Transom

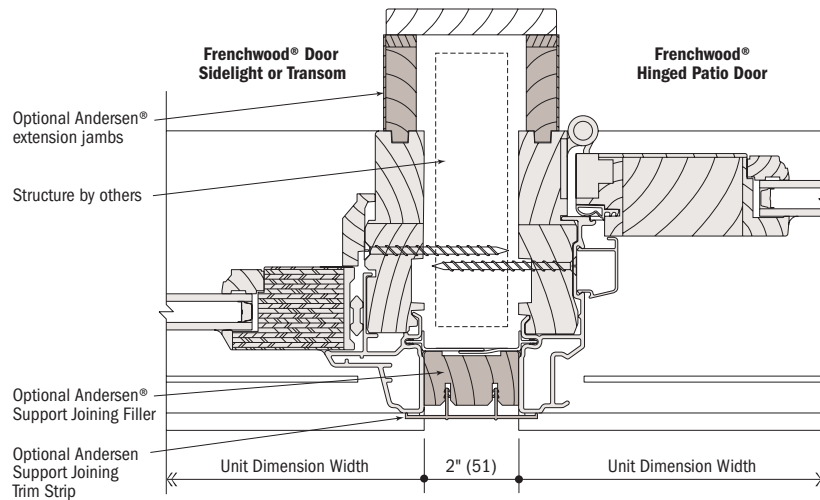
Joining Details

Andersen® Joining Materials

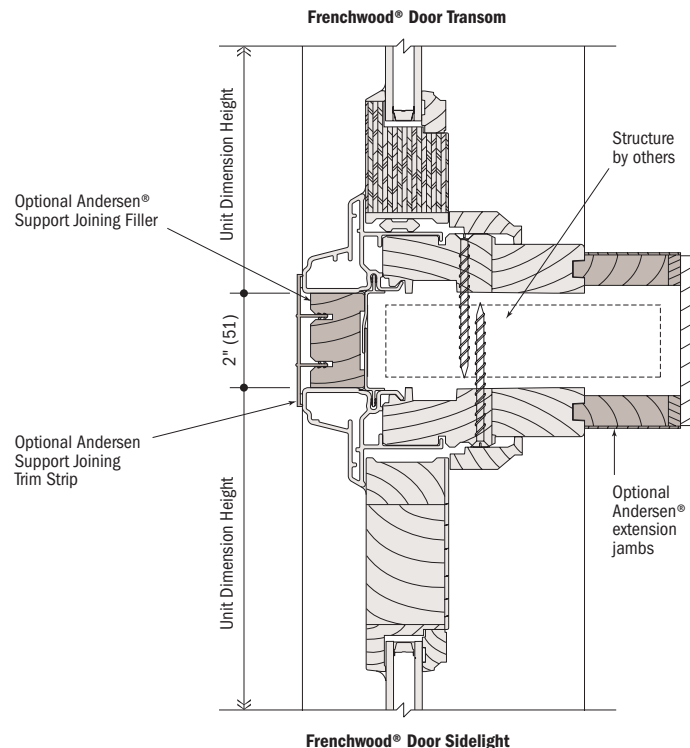
Scale 3" = 1'-0" (1:4)

Joining Compatibility

Many Andersen® units are designed to be joined with other Andersen units in a variety of non-reinforced and reinforced combinations. Other combination types and joining methods can be viewed in the *Andersen® Product Guide for Professionals*, in Andersen Window Studio® software, and by visiting andersenwindows.com. Combination designs should always be checked for design pressure performance requirements to ensure the appropriate joining method is specified.



Andersen 2" Support Mullion

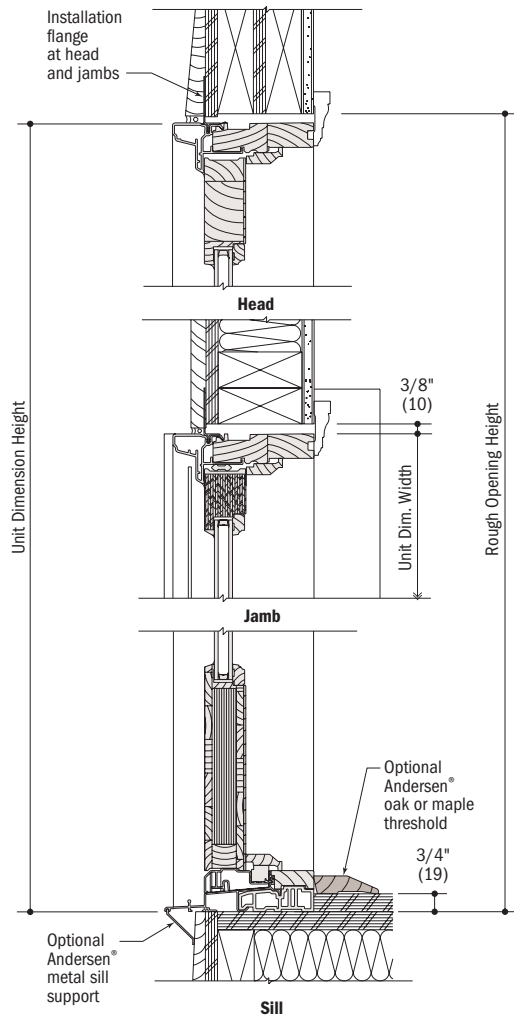


Andersen 2" Support Transom

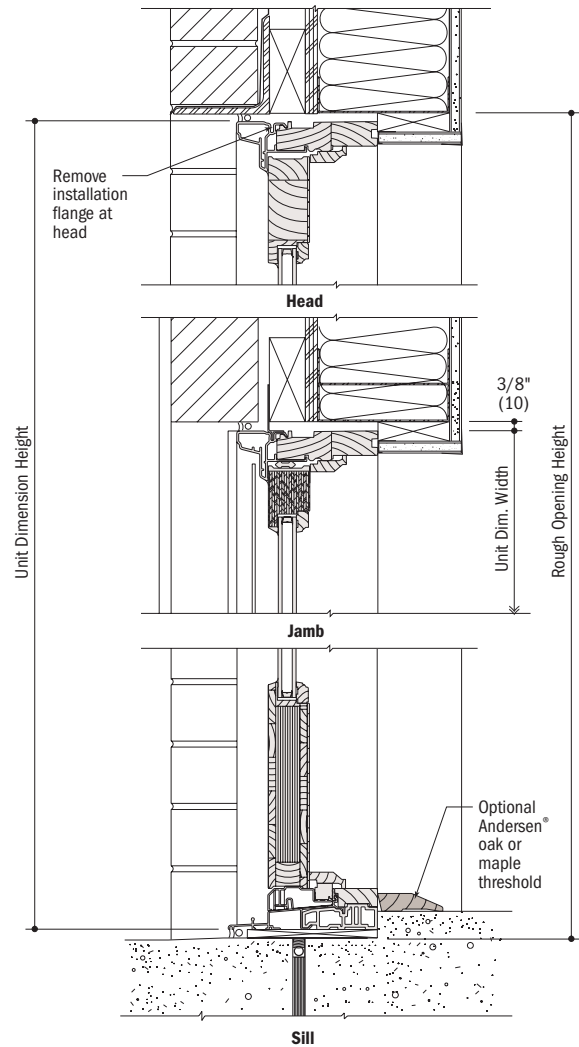
Suggested Product Applications

Wall Types

Scale 1-1/2" = 1'-0" (1:8)



Vertical Section
Wood Siding / 2 x 4 Wood Stud Framing



Vertical Section
Brick Veneer / 2 x 6 Metal Stud Framing

Importance of Proper Installation

Proper installation and maintenance of Andersen® products are essential if optimum performance is to be fully attained. Written installation instructions which provide guidelines for proper installation are available for Andersen products from your local Andersen supplier or by writing to: Andersen Windows, Inc., Box 12, Bayport, MN 55003 or by visiting our website at www.andersenwindows.com. Remember that every installation is different. Andersen strongly recommends consultation with an Andersen product representative and with an experienced contractor, architect, or structural engineer prior to the installation of any Andersen product. Installation of Andersen products, including method of attachment, fastener selection, and code compliance is the sole responsibility of the architect, building owner, contractor, and/or consumer.

Construction by Others

Andersen Corporation is not responsible for the design of, conditions in, or performance of, adjacent wall or roof construction beyond the perimeter of the Andersen units. Proper integration of the Andersen units with the weather-repellent system of the building is the responsibility of others.

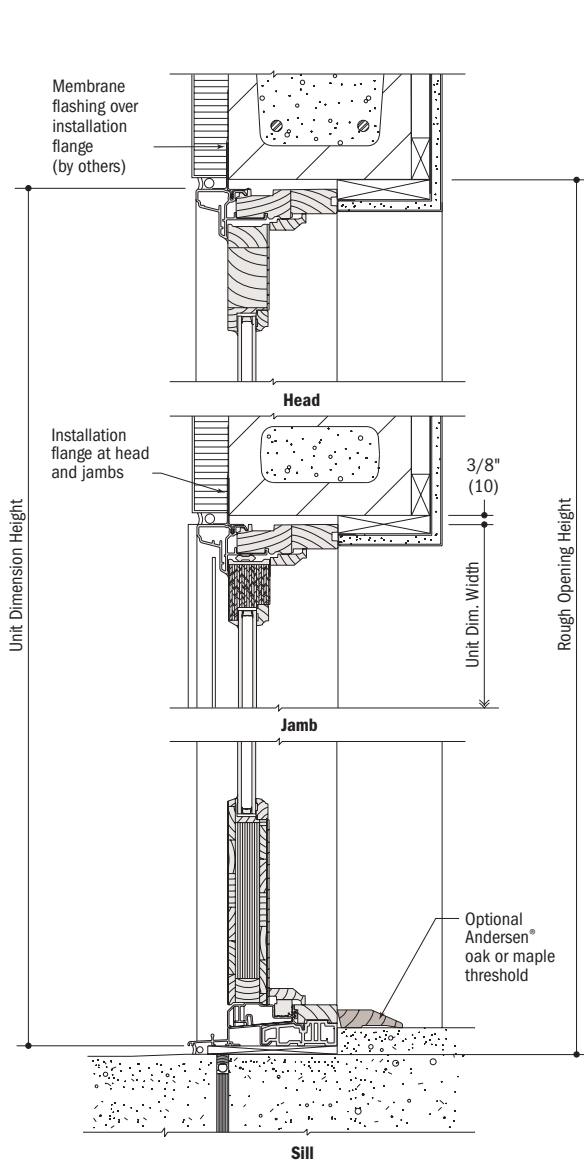
NOTE: Where E.I.F.S. wall finish is adjacent to units, contact E.I.F.S. manufacturer for installation instructions, including the use of appropriate flashing, the proper use of sealant and backer rod, and the proper width of sealant joint around the perimeter of the window.

NOTE: Leave adequate clearance between sill and masonry for caulking and dimensional change of framework. Installation flange may be removed where construction sequence/ detailing requires no flange.

Suggested Product Applications

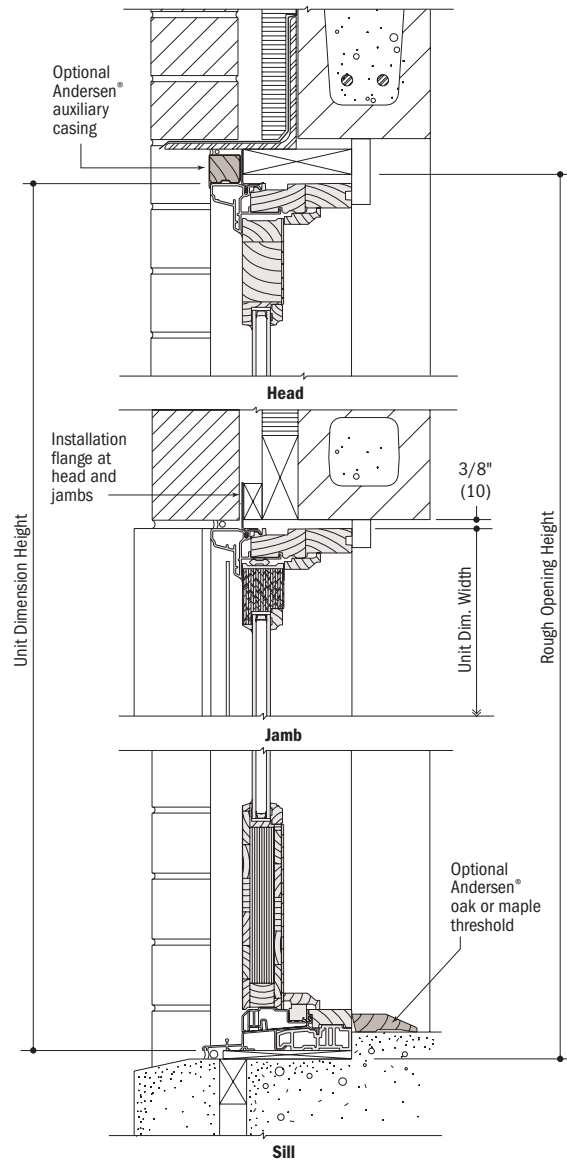
Wall Types

Scale 1-1/2" = 1'-0" (1:8)



Vertical Section

E.I.F.S. / Concrete Masonry Unit (CMU)



Vertical Section

Brick / Concrete Masonry Unit (CMU)

Importance of Proper Installation

Proper installation and maintenance of Andersen® products are essential if optimum performance is to be fully attained. Written installation instructions which provide guidelines for proper installation are available for Andersen products from your local Andersen supplier or by writing to: Andersen Windows, Inc., Box 12, Bayport, MN 55003 or by visiting our website at www.andersenwindows.com. Remember that every installation is different. Andersen strongly recommends consultation with an Andersen product representative and with an experienced contractor, architect, or structural engineer prior to the installation of any Andersen product. Installation of Andersen products, including method of attachment, fastener selection, and code compliance is the sole responsibility of the architect, building owner, contractor, and/or consumer.

Construction by Others

Andersen Corporation is not responsible for the design of, conditions in, or performance of, adjacent wall or roof construction beyond the perimeter of the Andersen units. Proper integration of the Andersen units with the weather-repellent system of the building is the responsibility of others.

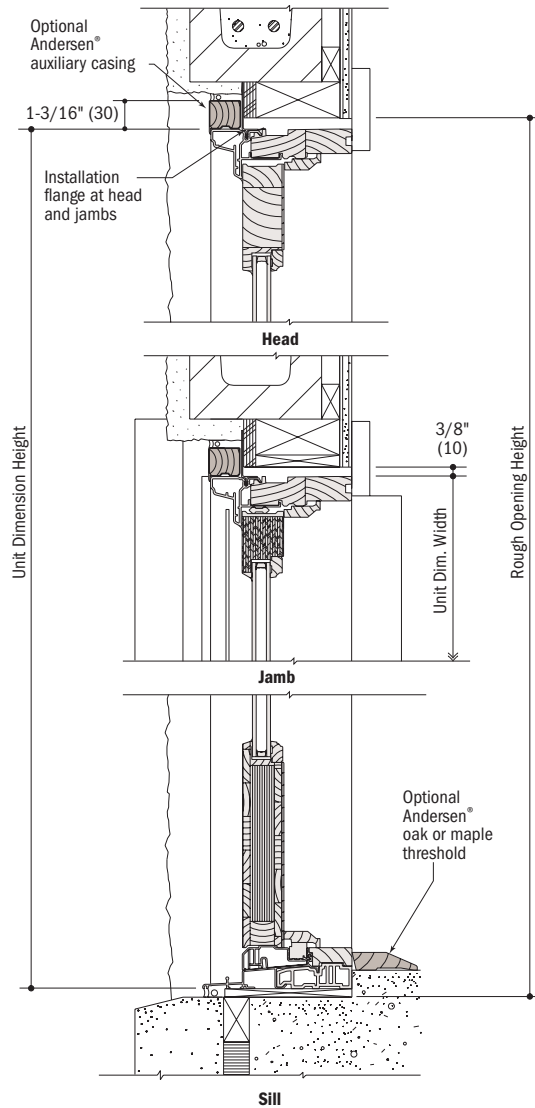
NOTE: Where E.I.F.S. wall finish is adjacent to units, contact E.I.F.S. manufacturer for installation instructions, including the use of appropriate flashing, the proper use of sealant and backer rod, and the proper width of sealant joint around the perimeter of the window.

NOTE: Leave adequate clearance between sill and masonry for caulking and dimensional change of framework. Installation flange may be removed where construction sequence/ detailing requires no flange.

Suggested Product Applications

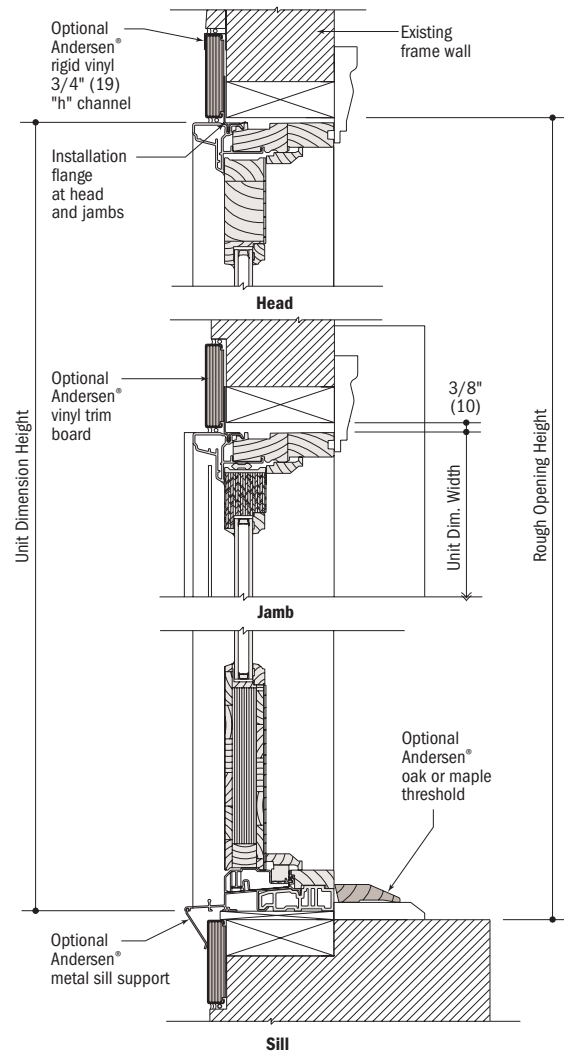
Wall Types

Scale 1-1/2" = 1'-0" (1:8)



Vertical Section

Stucco / Concrete Masonry Unit (CMU) Inset Door



Vertical Section

Existing Stud Wall

Importance of Proper Installation

Proper installation and maintenance of Andersen® products are essential if optimum performance is to be fully attained. Written installation instructions which provide guidelines for proper installation are available for Andersen products from your local Andersen supplier or by writing to: Andersen Windows, Inc., Box 12, Bayport, MN 55003 or by visiting our website at www.andersenwindows.com. Remember that every installation is different. Andersen strongly recommends consultation with an Andersen product representative and with an experienced contractor, architect, or structural engineer prior to the installation of any Andersen product. Installation of Andersen products, including method of attachment, fastener selection, and code compliance is the sole responsibility of the architect, building owner, contractor, and/or consumer.

Construction by Others

Andersen Corporation is not responsible for the design of, conditions in, or performance of, adjacent wall or roof construction beyond the perimeter of the Andersen units. Proper integration of the Andersen units with the weather-repellent system of the building is the responsibility of others.

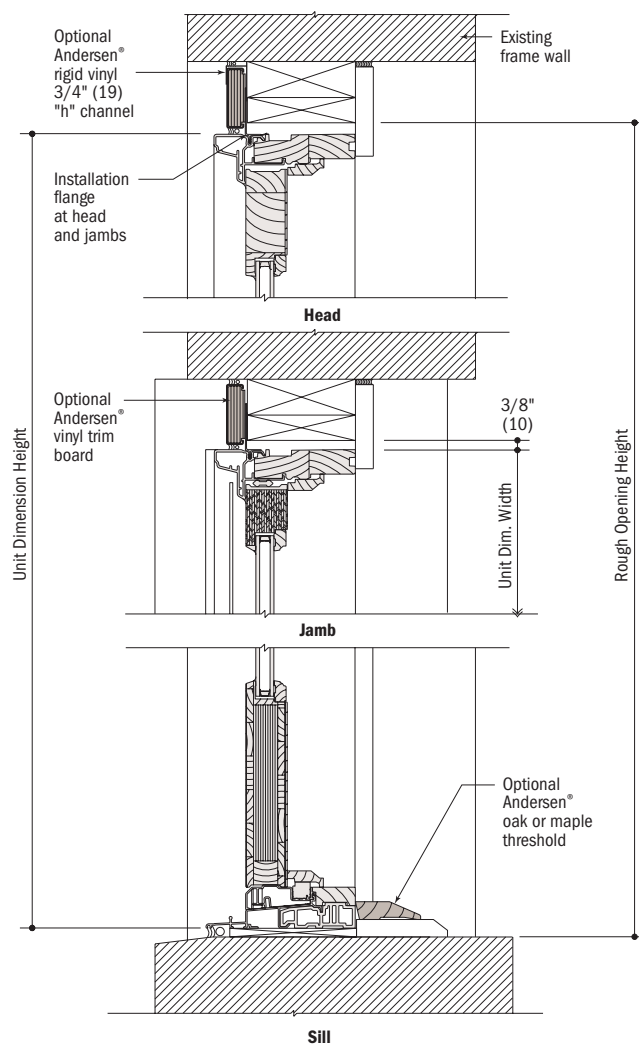
NOTE: Where E.I.F.S. wall finish is adjacent to units, contact E.I.F.S. manufacturer for installation instructions, including the use of appropriate flashing, the proper use of sealant and backer rod, and the proper width of sealant joint around the perimeter of the window.

NOTE: Leave adequate clearance between sill and masonry for caulking and dimensional change of framework. Installation flange may be removed where construction sequence/ detailing requires no flange.

Suggested Product Applications

Wall Types

Scale 1-1/2" = 1'-0" (1:8)



Vertical Section
Existing Masonry Wall

Importance of Proper Installation

Proper installation and maintenance of Andersen® products are essential if optimum performance is to be fully attained. Written installation instructions which provide guidelines for proper installation are available for Andersen products from your local Andersen supplier or by writing to: Andersen Windows, Inc., Box 12, Bayport, MN 55003 or by visiting our website at www.andersenwindows.com. Remember that every installation is different. Andersen strongly recommends consultation with an Andersen product representative and with an experienced contractor, architect, or structural engineer prior to the installation of any Andersen product. Installation of Andersen products, including method of attachment, fastener selection, and code compliance is the sole responsibility of the architect, building owner, contractor, and/or consumer.

Construction by Others

Andersen Corporation is not responsible for the design of, conditions in, or performance of, adjacent wall or roof construction beyond the perimeter of the Andersen units. Proper integration of the Andersen units with the weather-repellent system of the building is the responsibility of others.

NOTE: Where E.I.F.S. wall finish is adjacent to units, contact E.I.F.S. manufacturer for installation instructions, including the use of appropriate flashing, the proper use of sealant and backer rod, and the proper width of sealant joint around the perimeter of the window.

NOTE: Leave adequate clearance between sill and masonry for caulking and dimensional change of framework. Installation flange may be removed where construction sequence/ detailing requires no flange.