

# A21 Operator Installation/Replacement Guide

for Andersen® 200/400 Series Awning Windows  
(Conversion from 1976 Series A21 Operator)



**400**  
series  
**200**  
series

Please read this guide completely before starting. For questions about this and other Andersen® products, call 1-888-888-7020.

For the most current version of this guide visit [www.andersenwindows.com](http://www.andersenwindows.com). Consult your local building code official for applicable building codes and regulations. Thank you for choosing Andersen® products.

Please leave this information with homeowner.

## Parts Included

Installation Guide

(1) Operator

(2) Sash Brackets

(5) #8 x 1-3/8" Oval Head Screws

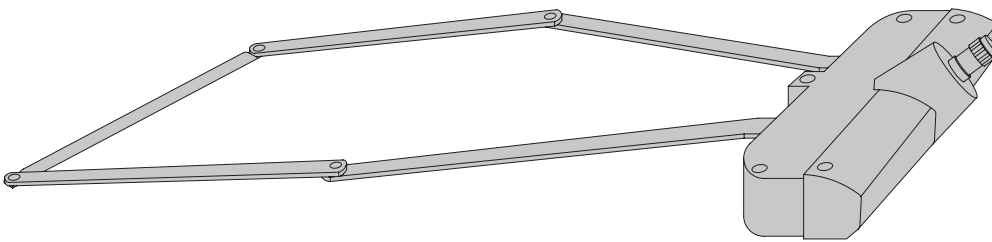
(2) #7 x 5/8" Truss Head Screws

## Supplies Needed

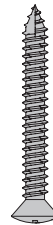
- Filler Material
- Silicone (Color Matched)

## Tools Needed

- Safety Glasses
- Phillips Screwdriver
- Drill
- 3/32" Drill Bit
- 1/8" Drill Bit
- Hammer
- Nail Set
- Pencil
- Putty Knife
- Wood Block



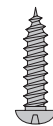
Operator



#8 x 1-3/8"  
Oval Head Screws  
(Operator Base)



Sash Bracket



#7 x 5/8"  
Truss Head Screws  
(Sash Brackets)

Read and follow these warnings during installation.

### ⚠ WARNING

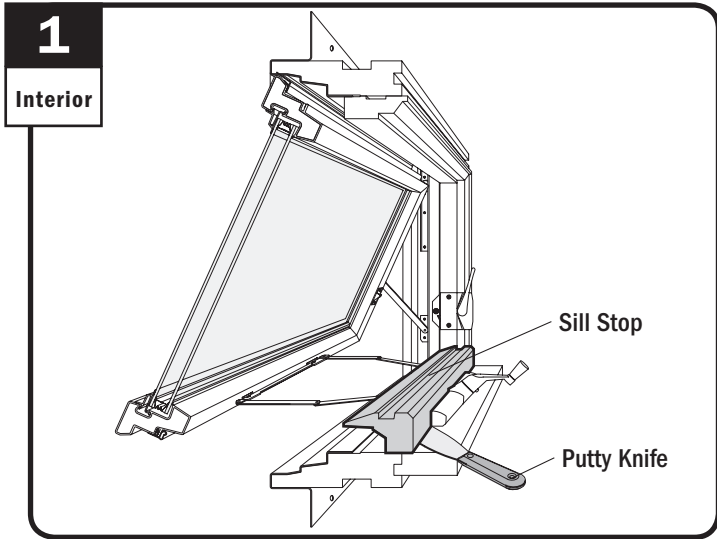
Windows and doors can be heavy. Use safe lifting techniques and a reasonable number of people with enough strength to lift, carry and install window and door products to avoid injury and/or product damage.

### ⚠ WARNING

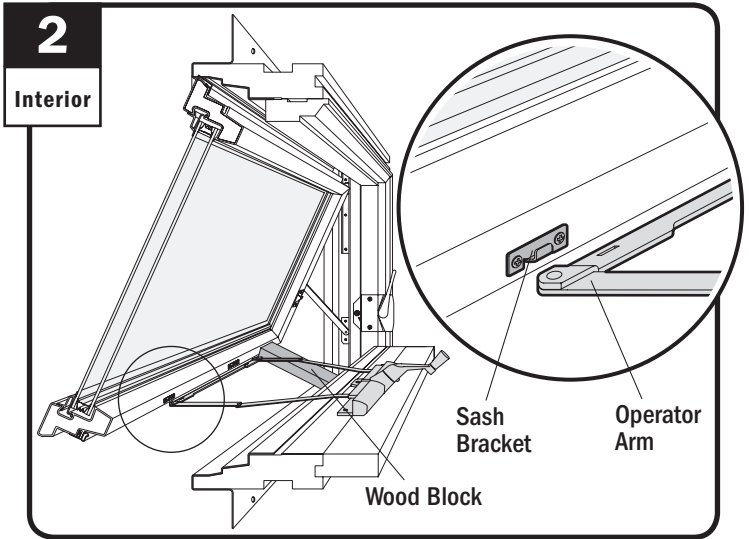
Follow manufacturer's instructions for safe operation of hand/power tools. Always wear safety glasses. Failure to do so may result in injury and/or product damage.

### ⚠ WARNING

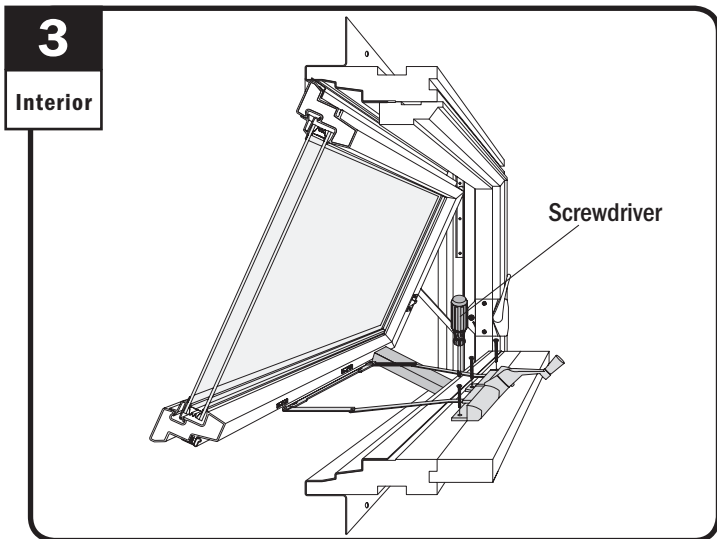
Use caution when working at elevated heights and around unit openings. Follow manufacturer's instructions for safe use of ladder and/or scaffolding. Failure to do so may result in injury or death.



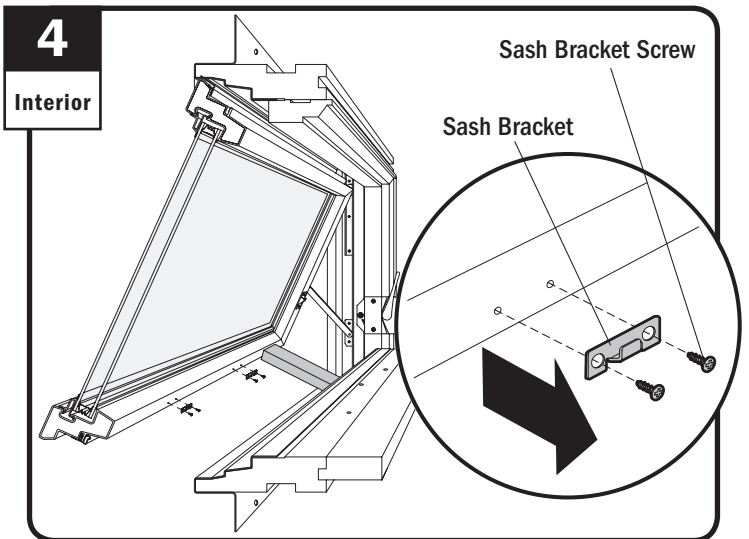
Open sash and remove sill stop.



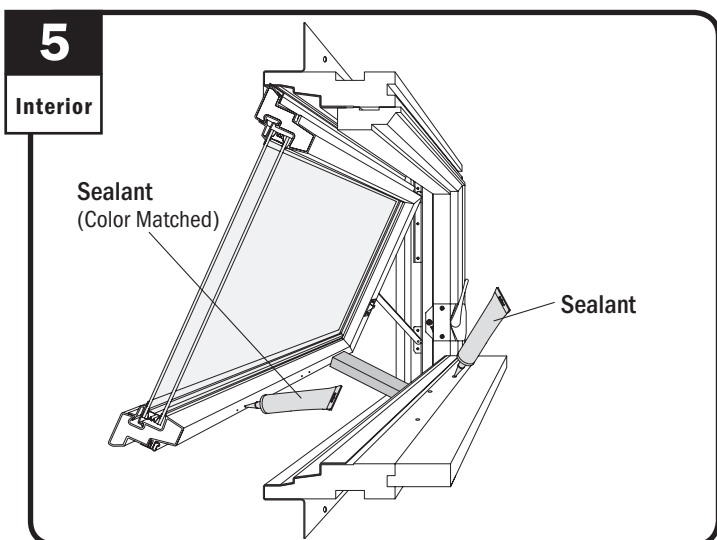
Remove operator from sash brackets and brace sash open using wood block.



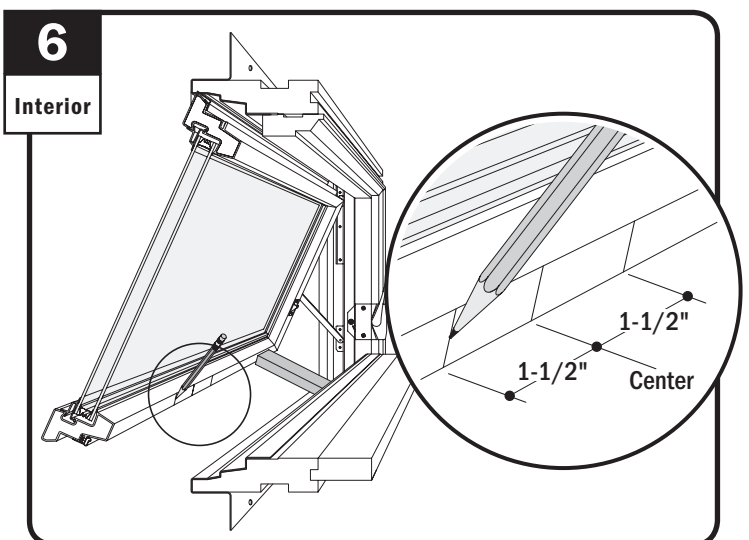
Remove operator screws and operator.



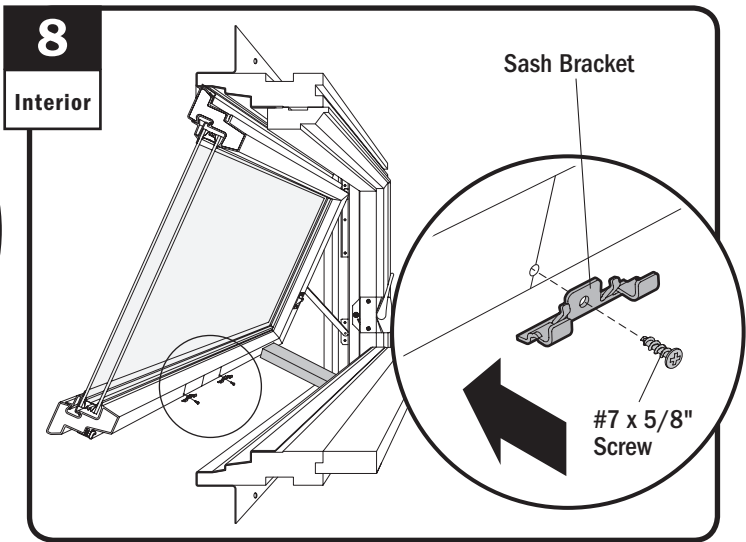
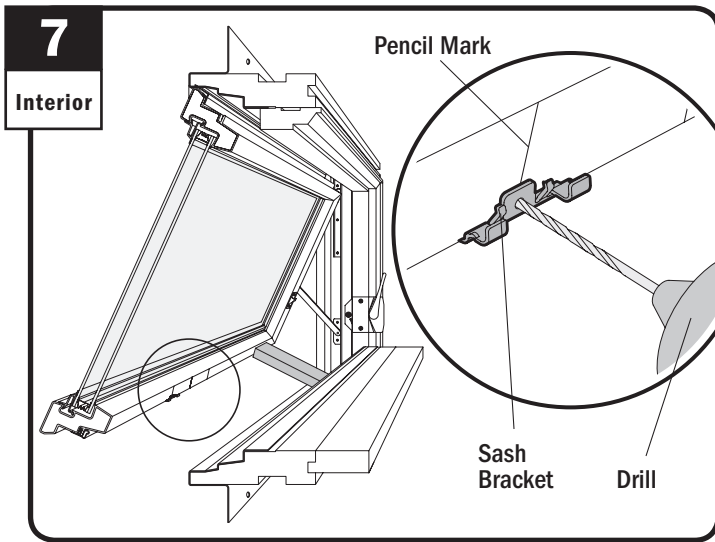
Remove sash bracket screws and sash brackets.



Fill and seal holes.

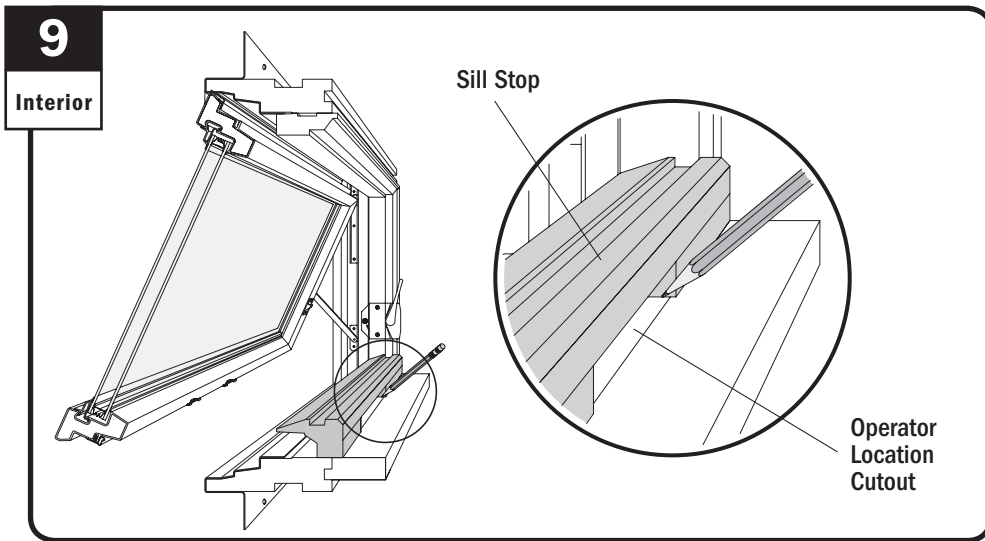


Measure and mark location of sash brackets from center of sash.

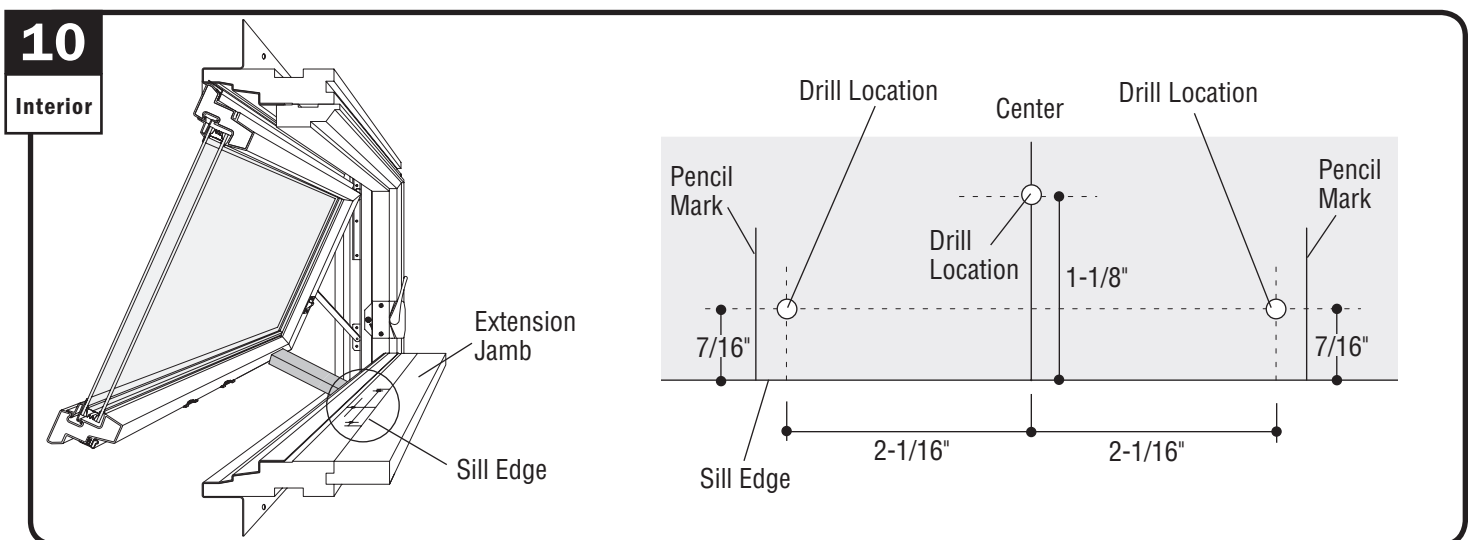


Center bracket on scribed line. Drill 1/8" holes 1/16" deep in marked locations using sash bracket as a template.

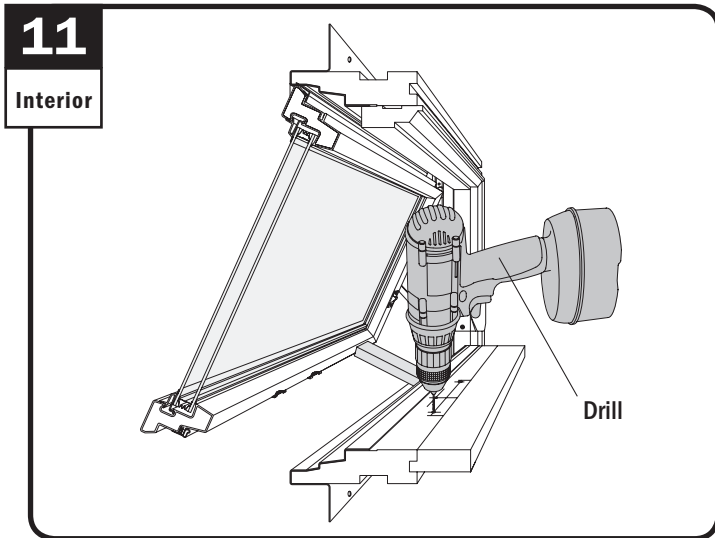
Fasten sash brackets.



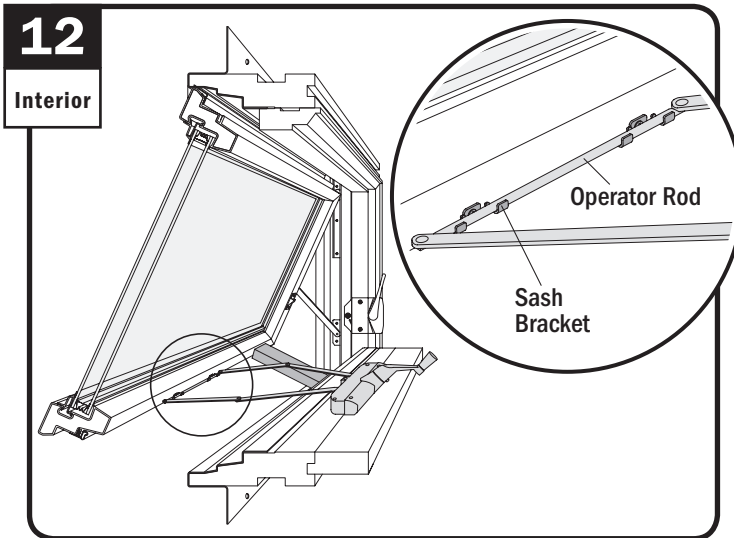
Position sill stop and use cutout as a guide to mark operator location. Remove sill stop.



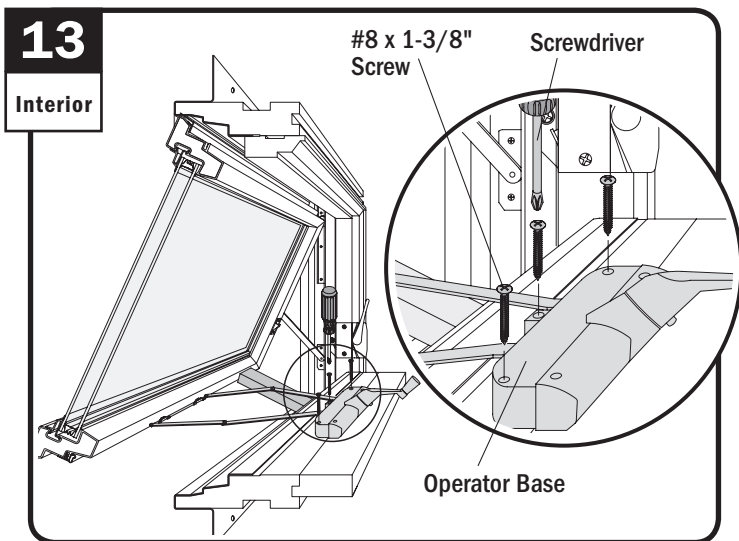
Mark center line between pencil marks made in previous step. Measure 1-1/8" from edge of sill and mark on center line. Measure and mark 2-1/16" from each side of center and 7/16" from edge of sill.



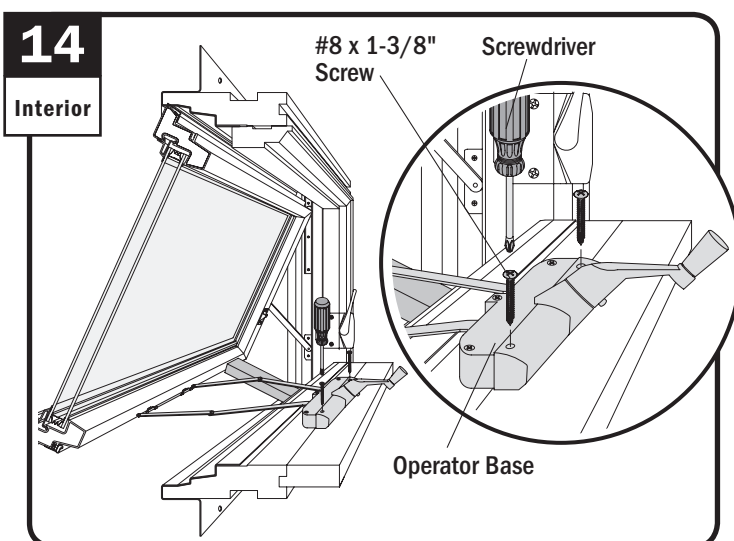
Drill 3/32" holes 1/2" deep in marked locations.



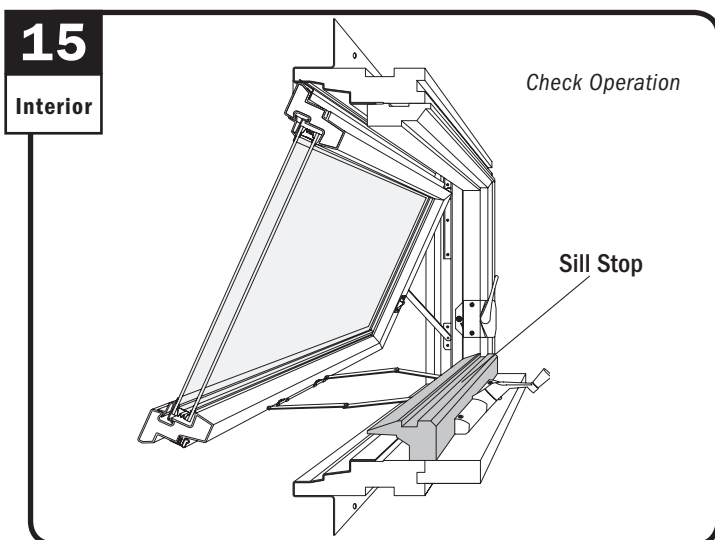
Press operator rod onto sash brackets.



Position operator base over drilled holes and fasten three screws.



Fasten remaining two screws through operator base.



Remove wood block and check operation. Reapply sill stop.