

Measurement Guide

for Andersen® 400 Series Custom-Size Casement, Awning, Picture and Transom Windows

Thank you for choosing Andersen.

For questions call 1-888-888-7020 Monday - Friday, 7 a.m. to 7 p.m. and Saturday, 8 a.m. to 4 p.m. central time. For more information and/or guides visit andersenwindows.com.

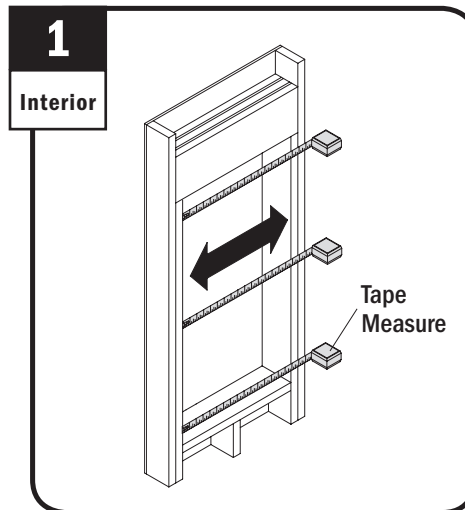
- ▶ Read this measurement guide from beginning to end before beginning. Read all warnings and cautions during unit installation.
- ▶ Read and follow product installation guide for installation instructions.

Before Measuring:

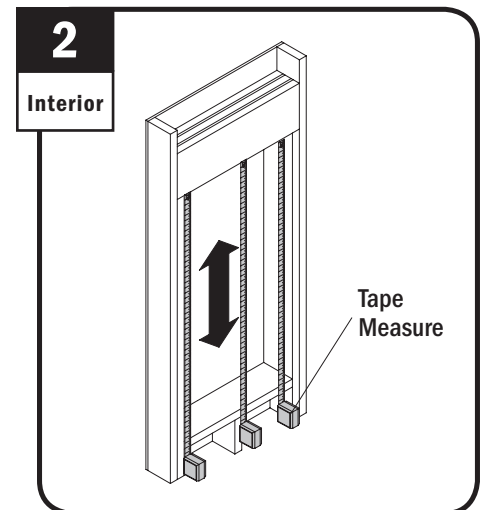
- ▶ Be sure rough opening is sound and suitable for window replacement.
- ▶ Existing opening must be plumb, level and square. If not, adjustments must be made to window size when ordering.

Measuring Information:

- ▶ Record measurements on "Measurement Worksheet". (Allow for use of building wraps, flashing, sill panning, brackets, fasteners or other items).
- ▶ Describe window locations clearly. Record measurements (round down to nearest 1/8").
- ▶ Measure each window even if they appear the same size.



Measure rough opening width at bottom, middle, and top. Record smallest width on worksheet (round down to nearest 1/8").

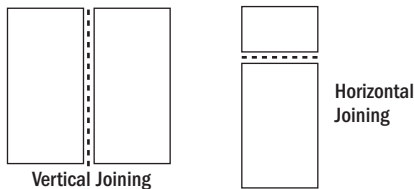


Measure rough opening height at sides and middle. Record smallest height on worksheet (round down to nearest 1/8").

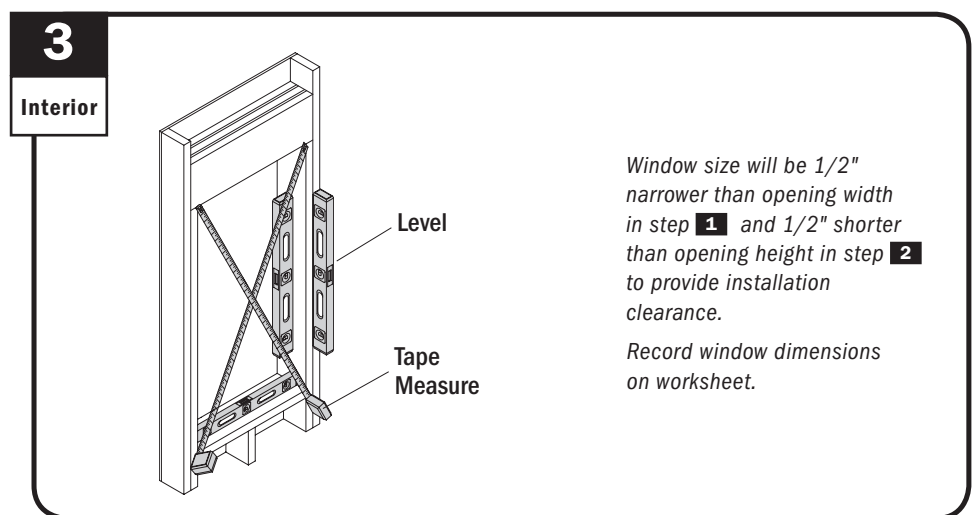
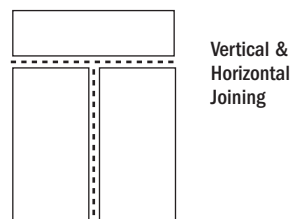
Joined Combinations:

- ▶ Custom-size casement, awning, picture and transom windows can be joined in 1-way and 2-way combinations as shown below.

1-Way



2-Way



Window size will be 1/2" narrower than opening width in step 1 and 1/2" shorter than opening height in step 2 to provide installation clearance.

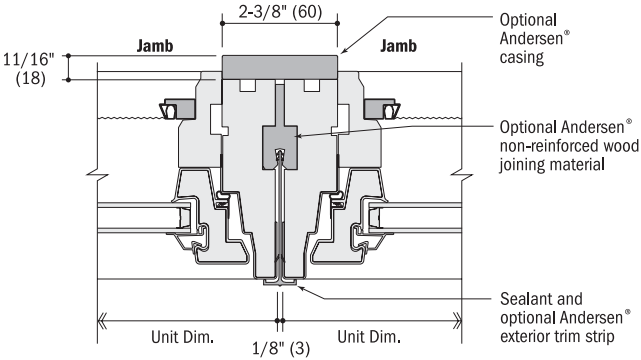
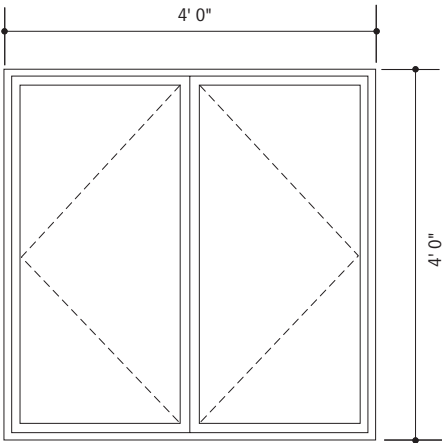
Record window dimensions on worksheet.

Check plumb, level, square. Diagonals must be within 1/8". Subtract 1/2" from rough opening width and height measurements recorded in steps 1 and 2.

- ▶ See joining calculation example on back side.

Joining
Calculation
Example

► When joining windows, consider the additional thickness of joining materials.



Example: 2 Casement Units Non-Reinforced Vertical Join
Joining Material: Wood
Overall Rough Opening Dimensions: width = 4' 0" height = 4' 0"

	Width	Height
Convert overall rough opening measurements to inches	4' 0" = 48"	4' 0" = 48"
Subtract – 1/2"	48" – 1/2" = 47-1/2"	48" – 1/2" = 47-1/2"
Subtract joining material thickness* – 1/8" (Non-Reinforced wood joining material)	47-1/2" – 1/8" = 47-3/8"	
Divide by number of units (2)	47-3/8" ÷ 2 = 23-11/16"	
Round down to nearest 1/8"	23-11/16" ➡ 23-5/8"	
Single window dimensions	23-5/8"	47-1/2"

* joining material and thickness vary depending on structural requirements.

Measurement Worksheet

for Andersen® 400 Series Custom-Size Casement, Awning, Picture and Transom Windows

Customer

NAME _____	PHONE _____
ADDRESS _____	E-MAIL _____
CITY/STATE/ZIP _____	ORDER DATE _____

Window Location	example: bathroom, _____		Window #	_____ of _____
Rough Opening & Unit Size <input type="radio"/> Single window <input type="radio"/> Part of joined combination <i>See joining on back cover</i>	rough opening		window size	
	STEP 1 Smallest measured width (round down to nearest 1/8") _____ (width)	STEP 2 Smallest measured height (round down to nearest 1/8") _____ (height)	STEP 3 Subtract 1/2" from width and height recorded in steps 1 & 2 . (see custom sizing table on back side of worksheet). _____ x _____ (width) (height)	Quantity needed of this window type: _____
Window Style & Venting Configuration <input type="radio"/> Upgrade to Stormwatch®	<div style="display: flex; justify-content: space-between;"> <div style="width: 30%;"> <input type="radio"/> casement <input type="radio"/> left <input type="radio"/> right <input type="radio"/> stationary </div> <div style="width: 30%;"> <input type="radio"/> awning <input type="radio"/> venting <input type="radio"/> stationary </div> <div style="width: 30%;"> <input type="radio"/> picture </div> <div style="width: 30%;"> <input type="radio"/> transom </div> </div>			
Frame Option	<input type="radio"/> flange <input type="radio"/> no flange			
Color & Finish	exterior		interior	
	<input type="radio"/> white <input type="radio"/> Terratone® <input type="radio"/> sandtone <input type="radio"/> forest green		<input type="radio"/> pre-finished white <input type="radio"/> pine	
Glass Options	<input type="radio"/> non-tempered <input type="radio"/> tempered <input type="radio"/> Low-E4® glass <input type="radio"/> Low-E4® SmartSun™ glass <input type="radio"/> Low-E4® Sun glass		<input type="radio"/> Stormwatch® Impact Resistant Glass <input type="radio"/> Low-E4® glass <input type="radio"/> Low-E4® SmartSun™ glass <input type="radio"/> Monolithic	
Grille Style & Size	Divided Light		removable	Finelight™
	<input type="radio"/> with spacer <input type="radio"/> no spacer <input type="radio"/> no spacer, removable interior		<input type="radio"/> removable interior only	<input type="radio"/> between glass
	<input type="radio"/> 3/4" <input type="radio"/> 7/8" <input type="radio"/> 1-1/8" <input type="radio"/> 2-1/4" (divided light only)		<input type="radio"/> 3/4" <input type="radio"/> 1"	
Grille Pattern	<div style="display: flex; justify-content: space-around;"> <div> <input type="radio"/> specified light </div> <div> <input type="radio"/> prairie A </div> <div> <input type="radio"/> custom </div> <div> <input type="radio"/> none </div> </div>			
Insect Screens	TruScene® <input type="radio"/> white <input type="radio"/> stone <input type="radio"/> wood		conventional <input type="radio"/> white <input type="radio"/> stone	
Extension Jamb	<input type="radio"/> thick replacement (4-9/16" or 6-9/16" depth only) <input type="radio"/> clear pine <input type="radio"/> pre-finished white <input type="radio"/> pre-finished white			
Hardware	<input type="radio"/> standard 4-9/16" to 7-9/16" depth (in 1/16" increments) <input type="radio"/> clear pine <input type="radio"/> pre-finished white <input type="radio"/> maple <input type="radio"/> oak			
	<input type="radio"/> (depth) _____			
	Estate™	folding	classic	
	<input type="radio"/> antique brass <input type="radio"/> polished chrome <input type="radio"/> bright brass <input type="radio"/> brushed chrome <input type="radio"/> oil rubbed bronze <input type="radio"/> satin nickel <input type="radio"/> distressed bronze <input type="radio"/> distressed nickel	traditional <input type="radio"/> white <input type="radio"/> stone <input type="radio"/> bright brass <input type="radio"/> antique brass <input type="radio"/> oil rubbed bronze <input type="radio"/> satin nickel	contemporary <input type="radio"/> white <input type="radio"/> stone <input type="radio"/> bright brass <input type="radio"/> oil rubbed bronze <input type="radio"/> satin nickel	<input type="radio"/> white <input type="radio"/> stone

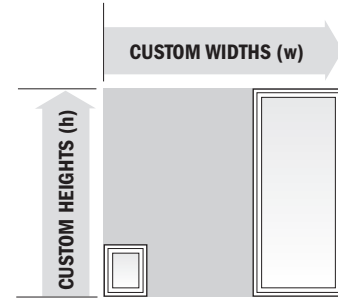
► See custom sizing tables on back side of worksheet.

Notes and sketches

(sketch grille pattern)

Custom-Size Casement Products Sizing Table (in 1/8" increments)

Product	(min./max.) Width		(min./max.) Height
Casement (Venting & Stationary)	1' 5" to 2' 11-7/8"	X	2' 0-1/8" to 5' 11-7/8"
Casement Transom	1' 5" to 7' 0-5/8"	X	1'-0" to 1'-0"
Awning Venting	2' 0-1/8" to 4'-0"	X	1' 5" to 4' 0"
	4' 0-1/8" to 5' 11-7/8"*	X	1' 5" to 2' 11-7/8"*
<i>* windows wider than 4' 11-7/8" and taller than 2' 7-1/2" must be stationary only.</i>			
Awning Stationary	2' 0-1/8" to 5' 11-7/8"	X	1' 5" to 2' 11-7/8"
Picture Window	3' 0" to 4' 11-7/8"	X	3' 0" to 5' 11-7/8"
	5' 0" to 5' 11-7/8"	X	3' 0" to 4' 11-7/8"
Picture Transom	3' 0" to 5' 11-7/8"	X	1' 0" to 1' 0"



Notes and sketches



StormWATCH
PROTECTION

**Custom-Size Casement Products Sizing Table (in 1/8" increments)
with Stormwatch® Protection**

Product	(min./max.) Width		(min./max.) Height
Casement (Venting & Stationary)	1' 5" to 2' 7-1/2"	X	2' 0-1/8" to 5' 11-7/8"
	2' 7-5/8" to 2' 11-7/8"	X	2' 0-1/8" to 4' 4-3/4"
Casement Transom	1' 5" to 5' 11-7/8"	X	1' 0" to 1' 0"
Awning Venting (Venting & Stationary)	2' 0-1/8" to 4' 11-7/8"	X	1' 5" to 2' 7-1/2"
Picture Window	3' 0" to 4' 11-7/8"	X	3' 0" to 5' 11-7/8"
	5' 0" to 5' 11-7/8"	X	3' 0" to 4' 11-7/8"
Picture Transom	3' 0" to 5' 11-7/8"	X	1' 0" to 1' 0"