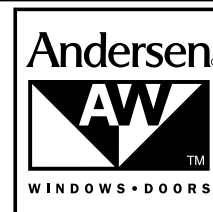


# Sash Lift

for Andersen® 400 Series Woodwright™, 400 Series Tilt-Wash, 200 Series Narroline®, and Renewal by Andersen® Double-Hung Windows



**INSTALLER: Please leave this guide with the building owner to file for future reference.**

For ease of installation and continued enjoyment of your Andersen® product, please read and follow this Instruction Guide completely. You may direct any questions about this or other products to your local Andersen dealer, found in the Yellow Pages under "Windows", or call Andersen WindowCare® service center at 1-888-888-7020 Monday through Friday, 7 a.m. to 7 p.m. Central Time and Saturday, 8 a.m. to 4 p.m. Central Time. Assembly and installation of Andersen products is the sole responsibility of the architect, building owner, contractor and/or consumer and Andersen has no responsibility in this regard. Thank you for choosing Andersen.

## ⚠ WARNING

Use of ladders and/or scaffolding and working at elevated levels may be hazardous. Follow equipment manufacturer's instructions for safe operation. Use extreme caution when working around window and door openings. Falling from opening may result in personal injury or death.

## ⚠ WARNING

Improper use of hand or power tools could result in personal injury and/or product damage. Follow equipment manufacturer's instructions for safe operation. Always wear safety glasses.

## ⚠ WARNING

Weight of window and door unit(s) and accessories will vary. Use a reasonable number of people with sufficient strength to lift, carry, and install window and door unit(s) and accessories. Always use appropriate lifting techniques.

## NOTICE

**DO NOT** use Contemporary Classic™, Contemporary Estate™ or Traditional Classic™ Hardware on units that have been upgraded with taller sill stops. Taller stops will interfere with lift and become damaged.

### Parts Included

#### (1) Installation Guide:

Contemporary - Estate™ Hardware with Screws

(1) Sash Lift (2) Finger Lifts

**or**

Contemporary - Classic™ Hardware with Screws

(1) Sash Lift (2) Finger Lifts

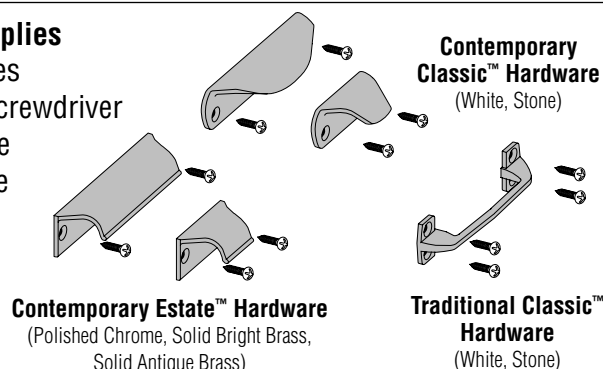
**or**

Traditional Classic Sash Lift with Screws

(1) Sash Lift

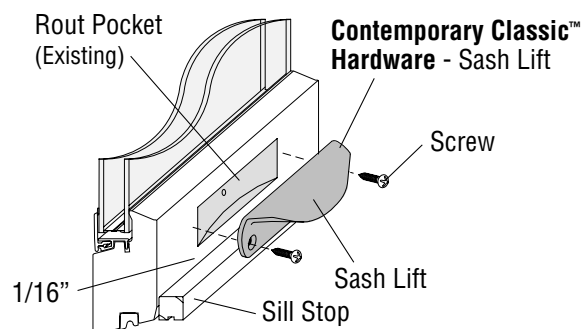
### Tools and Supplies

- Safety Glasses
- #2 Phillips Screwdriver
- Tape Measure
- Masking Tape
- Pencil
- Awl



### Narroline® Double-Hung Unit

- Close and lock sash.
- Remove existing *Sash Lift* and discard.
- Position replacement *Sash Lift* over rout pocket, covering it completely, and check clearance. Space between *Sash Lift* and *Sill Stop* should be 1/16". If closer, adjust *Sash Lift* upward to correct.
- Dimple surface of rail at screw locations using an awl.
- Attach *Sash Lift* to rail at marked locations using matching screws, provided.



"Andersen" and "Andersen WindowCare" are registered trademarks of Andersen Corporation. All other marks where denoted are marks of Andersen Corporation.

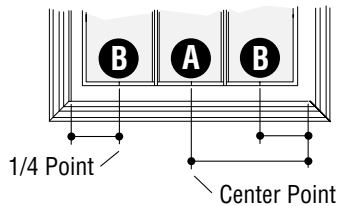
©1997-2003 Andersen Corporation. All rights reserved.

## Tilt-Wash, Woodwright™, and Renewal by Andersen® Double-Hung Units

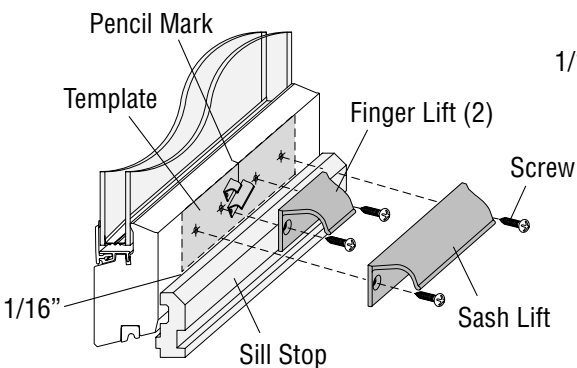
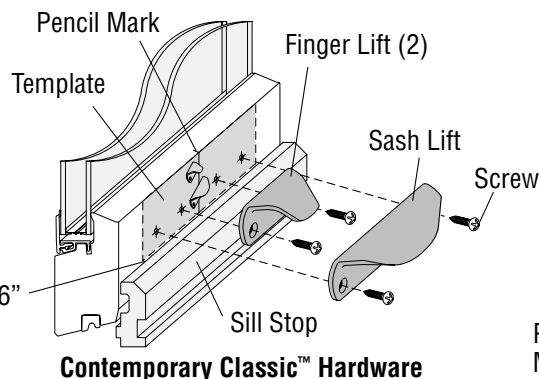
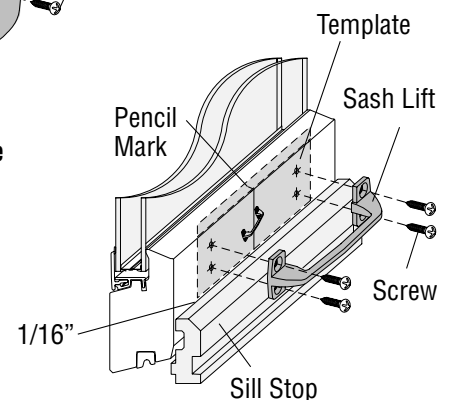
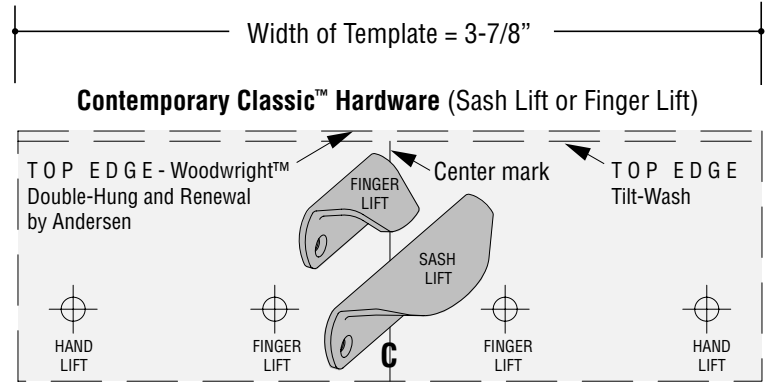
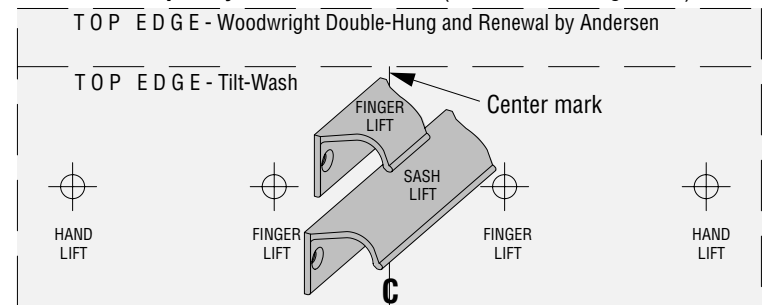
**CAUTION**

For instruction guides that have been printed from our website and/or from an electronic file, check measurement of template (right) to make sure it's size has not been altered.

- Close and lock Sash.
- Select and cut out *Template* for your hardware.



- For **Hand Lift**, determine center point (A) of *Sash* and mark lightly using a pencil.
- For **Finger Lifts**, determine quarter points (B) of *Sash* and mark lightly using a pencil.
- Position *Template* on bottom rail of lower *Sash*. Align top edge of *Template* with top edge of rail, match center mark with pencil mark, and attach using masking tape. Make sure correct top edge of template is used.
- Hold *Sash/Finger Lift* in position on *Template* and check clearance. Space between *Sash/Finger Lift* and *Sill Stop* should be 1/16". If closer, adjust *Template* upward to correct.
- Select correct screw location marks (+) for your type of *Sash/Finger Lift*. Dimple surface of rail at screw locations using an awl. For **Renewal by Andersen®** and **Woodwright™ Units**, drill 1/16" hole, 5/8" deep, at dimple.
- Position *Sash/Finger Lift* to rail at marked locations and attach using matching screws, provided.

**Contemporary Estate™ Hardware****Contemporary Classic™ Hardware**Tilt-Wash  
Units Shown**Traditional Classic™ Hardware****Contemporary Estate™ Hardware (Sash Lift or Finger Lift)****Traditional Classic™ Hardware (Sash Lift)**